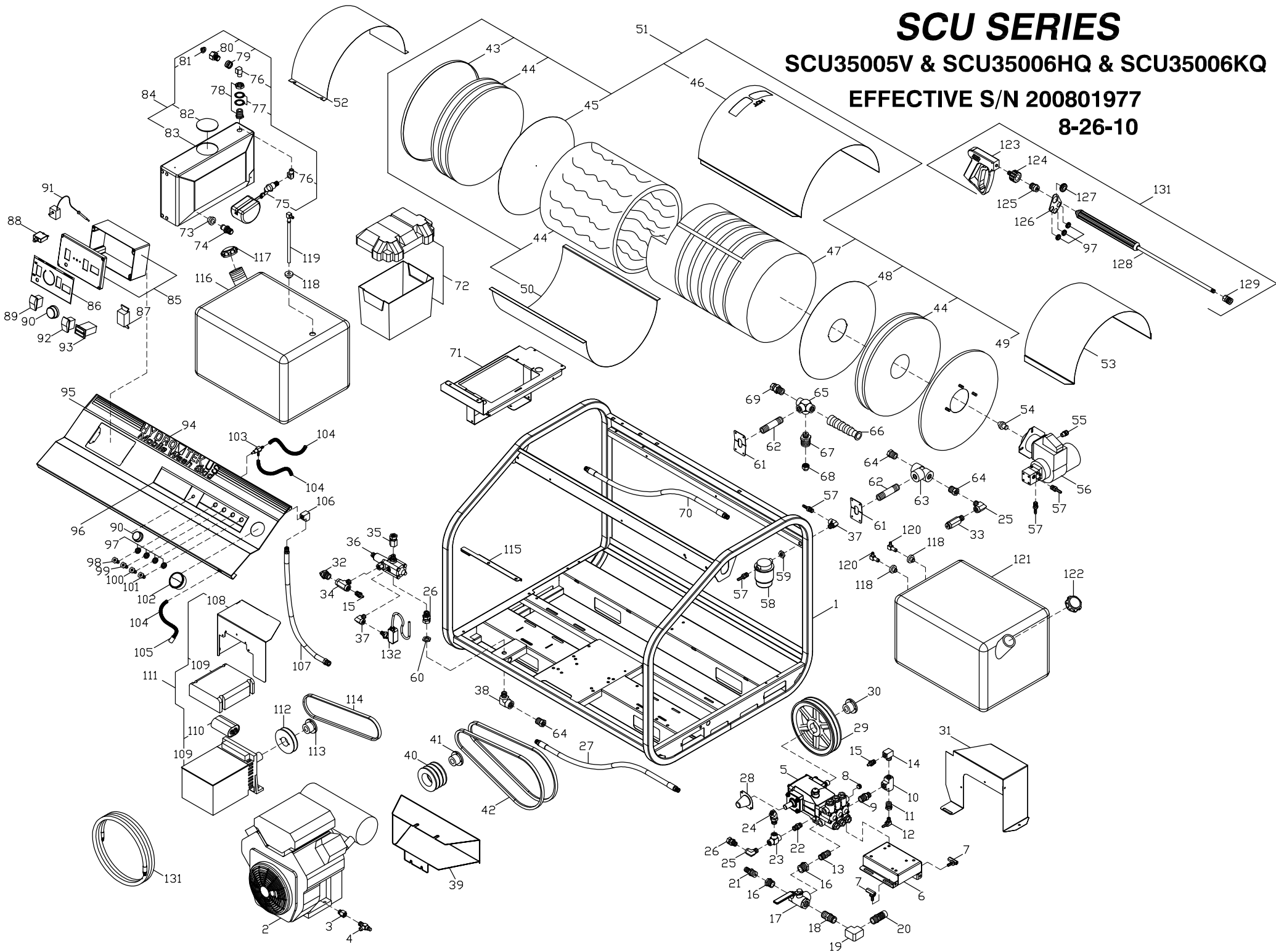


# SCU SERIES

SCU35005V & SCU35006HQ & SCU35006KQ

EFFECTIVE S/N 200801977

8-26-10



**SCU35005V, SCU35006HQ, SCU35006KQ**

**S/N2008019777**

**26-Aug-10**

1	HSC14	SCU FRAME 14 STAINLESS (2008)	41	KSP18	BUSHING P1 x 1 1/8 (SCU35006HQ, KQ)	90	ECH70	KNOB; BLUE .25id x 1.5od
2	MS180	ENGINE GAS 18HP VANGAURD E/S W/MUFFLER (SCU35005V)	42	KSB42	BELT BX42 (SCU35005V)			
	MK250	ENGINE 25HP KOHLER CS W/MUFFLER (SCU35006KQ)		KSB45	BELT BX45 (SCU35006HQ, KQ)	91	ECH50	THERMOSTAT; 60-250 1 GP PART=25
	MH240	ENGINE 24HP HONDA E/S W/MUFFLER (SCU35006HQ)	43	B0029	COIL CAP (FLAT END COIL) NO H0	92	EC411	ROCKER SWITCH 110V CLEAR SPST
3	D4060	MALE ADAPTER 3/8 BRASS (SCU35006KQ)	44	BN053	INSUL BLKT 50SQ' 1/2 x 24 8#25'	93	EM601	HOURLY METER 110V
4	MS006	OIL DRAIN VALVE 3/8 (SCU35005V, SCU35006KQ)	45	BN125	INSUL DISC RETAINER 17.5 DIA FOR BC225 COIL ASM	94	HSC38	SCU CONTROL PANEL, EZ ACCESS (2008)
	MS007	OIL DRAIN VALVE 14mm (SCU35006HQ)	46	B0089	COIL WRAP (FLAT END COIL) TOP	95	GLL79	LABEL, HYDRO TEK 47.375 x 3
5	P4535	PUMP 5CP3120 4.5 @ 3500 20mm (SCU35005V)	47	BC480	COIL; 4PK SCH 80 18"	96	GLL53	LABEL, SC OPS/WARNING 4 x 31"
	PG563	PUMP 5.6/3500 NICKEL PLATED MA (SCU35006HQ, KQ)	48	BN126	INSUL DISC RETAINER 17.5 DIA FOR BC225 COIL ASM	97	HLB09	GROMET NOZZLE HOLDER***
6	HSC40	PUMP RAIL ASSEM. SCU-2008 MODELS	49	B0017	END CAP (FLAT END COIL) 18" BU W/HOLES	98	NQ600	NOZZLE/QDC 06 x 0 (SCU35006HQ, KQ)
7	HPR60	PUMP RAIL BOLT	50	B0088	COIL WRAP (FLAT END COIL) BOTTOM		NQ450	NOZZLE/QDC 045 x 0 (SCU35005V)
8	D1061	PLUG 3/8 FLUSH HEAD HEX STEEL (SCU35005V)				99	NQ452	NOZZLE/QDC 045 x 15 (SCU35005V)
9	D2086	NIPPLE, 1/2 x 3/8 BRASS	51	BC225	COIL ASM 4PK (FLAT END COILS)		NQ602	NOZZLE/QDC 06 x 15 (SCU35006HQ, KQ)
10	D6066	TEE 3/8" BRASS	52	HCU15	BATTERY RAIN GUARD - SCU FLAT END CAP	100	NQ454	NOZZLE/QDC 045 x 40 (SCU35005V)
			53	HHP15	BURNER RAIN GUARD		NQ604	NOZZLE/QDC 06 x 40 (SCU35006HQ, KQ)
11	D1084	BUSHING 1/2 x 1/4 BRASS	54	BZ350	FUEL NOZZLE 3.5 90B (SCU35006HQ, KQ)			
12	D8040	HOSE BARB 1/4 90 ELBOW*		BZ276	FUEL NOZZLE 2.79 90B	101	NQ403	NOZZLE/QDC 04 x 25 (SCU35005V)
13	D2088	NIPPLE 1/2" BRASS	55	EW008	STRAIN RELIEF 1/2 HEYCO (3/8)		NQ503	NOZZLE/QDC 05 x 25 (SCU35006HQ, KQ)
14	D5566	STREET ELL 3/8 BRASS	56	BU600	BURNER BECKETT SM 110V	102	UG055	GAUGE; 5000psi DUAL SCALE; PN
15	D6062	HOSE BARB, PUSH LOCK 3/8H x 3/8	57	D8044	BARB; HOSE; 1/4; BRASS* .312 t	103	VVC10	CHEMICAL MET VALVE MV-100 MOD
16	D1128	BUSHING 3/4 x 1/2 BRASS	58	BF020	FUEL FILTER; RACOR HYDRO TEK	104	DHB04	TUBING; CLEAR BRAIDED; 1/4
17	VVB38	BALL VALVE 3/4" 3 WAY	59	D7064	HEX NUT 1/4 BRASS	105	VF045	STRAINER CHEMICAL W/CHECK
18	D2089	NIPPLE 3/4" BRASS	60	D7061	HEX NUT 3/8 BRASS-REMOTE UNLOADER	106	D5044	ELL 1/4 BRASS*
19	D7512	ELL 3/4" BRASS				107	DH128	HOSE 1/4 x 26" 5000psi HN GAUGE . . .
20	DJ033	ORIFICED BARB .339 3/4NPT x 1"H BARB	61	B2324	COIL NIPPLE RETAINER 1/2in 12/98BL			. . . HN MODULE GAUGE HOSE
		W/NYLON ORIFICE (SCU35005V)	62	BC850	BURNER NIPPLE 1/2 x 5 SCH 80	108	HSC20	GENERATOR BELT GUARD SCU
	DJ040	ORIFICED BARB .406 3/4NPT x 1"H BARB	63	DE088	TEE 1/2 STEEL A105 FORGED	109	MB020	GENERATOR 2500w LSA321L10
		W/NYLON ORIFICE (SCU35006HQ, KQ)	64	DA086	BUSHING 1/2 x 3/8 STEEL	110	MB025	CAPACITOR, GENERATOR 15MFD
21	D8077	HOSE BARB 5/8H x 1/2M .406id RED	65	DE08S	TEE 1/2in-SPECIAL 3/8 TAP			
22	DB506	NIPPLE 3/8 STEEL	66	ECH75	HEAVY DUTY BEND RESTICTOR-B	111	MB052	SCU GENERATOR ASSEMBLY (2008)
23	DE066	TEE 3/8 STEEL	67	UPB05	ADAPTER FITTING-BURST DISC***	112	KT034	SHEAVE BK34H (SCU35005V)
24	DE606	SWIVEL 45 3/8M x 3/8F STEEL	68	UPB80	BURST DISC 8000psi TORQUE 32-4		KT040	SHEAVE BK40H (SCU35006HQ, KQ)
25	DC568	STREET ELL 3/8 STEEL	69	DE568	SWIVEL 3/8F x 1/2M STEEL	113	KSH19	BUSHING H24mm
26	DE566	SWIVEL 3/8 STEEL	70	DH007	HOSE 3/8 x 48in 5000psi	114	KSB34	BELT BX34 (SCU35005V)
27	DH034	HOSE 3/8 x 34in 5000psi NO WIP					KSB38	BELT BX38 (SCU35006HQ, KQ)
28	PP692	SHAFT PROTECTOR 5 FRAME BD PMP (SCU35005V)	71	HB024	BATTERY BOX TRAY SCU (2008)	115	HPR57	ADJUSTER BRKT ASM-GENERATOR SCU
29	KU080	SHEAVE 2BK80H (SCU35005V)	72	HB100	BATTERY BOX ATWOOD G24 (LARGE)	116	WT08R	FUEL TANK 18 GAL GAS RED
	KU090	SHEAVE 2BK90H (SCU35006HQ, KQ)	73	DFF10	WATER TANK BUSHING 5/8	117	WT081	FUEL CAP; GASOLINE
30	KSH17	BUSHING H20mm (SCU35005V)	74	D1010	SPLICER 5/8 BRASS	118	DFF04	FUEL TANK BUSHING 1/4
	KSH19	BUSHING H24mm (SCU35006HQ, KQ)	75	VVF08	FLOAT VALVE 3/8 BRASS	119	DF599	FUEL TANK ADAPTER W/PLASTIC TUBE
			76	D5566	STREET ELL 3/8 BRASS	120	DFE04	FUEL TANK ELL 1/4
31	HSC46	PUMP BELT GUARD SCU-WITH 5CP PUMPS (SCU35005V)	77	FW701	FLOAT TANK WASHER			
	HSC42	PUMP BELT GUARD SCU HIGH FLOW UNITS (SCU35006HQ, KQ)	78	D7520	PANEL FITTING 3/4 BRASS	121	WT078	FUEL TANK 18 GAL DIESEL CLEAR*
32	UPT45	THERM DUMP VALVE 145F 3/8	79	D0010	SPRING GARDEN H A	122	WT080	FUEL CAP; DIESEL
33	UP045	PRESSURE RELIEF 4500+15% 500q	80	D006M	GARDEN H A 3/8 NPT MALE	123	VG200	TRIGGER GUN, INSULATED 4000psi
34	DEB66	BRANCH TEE 3/8 STEEL				124	DQ74T	M22 TWIST COUPLER 1/4" MALE
35	DE867	SWIVEL 3/8FP x 3/8FPS	81	D0021	SCREEN WASHER GARDEN H A	125	DQ74F	TWIST COUPLER 1/4 PLUG FEM-sut
36	UU371	UNLOADER 3-5 @ 3500 K7-1	82	HH400	FLOAT TANK COVER HINGED	126	HNZ05	NOZZLE HOLDER (FOR WAND)
37	DC043	STREET ELL 1/4 STEEL	83	WT040	TANK ; FLOAT 4 GAL HD LINEAR	127	HLB30	GROMET ; NOZZLE HOLDER***
38	DE586	STREET ELL 1/2FX x 3/8 STEEL	84	WT046	FLOAT TANK ASM W/VALVE/FILTER	128	VW045	WAND 1/4 x 48in MOLDED GRIP
39	HS048	MUFFLER HEAT SHIELD, 24 HONDA 8/98JR (SCU35006HQ)	85	HSC51	LASER CUT SC BOX ASM/TOP AND BOTTOM	129	DQ04S	COUPLER 1/4 SOCK FEM
	HS082	MUFFLER HEAT SHIELD 25 KOHLER (SCU35006HQ, KQ)	86	GLL57	LABEL; SC/SS PANEL CONTROL BOX***	130	AVGH3	WAND 48" MOLDED NOZZLE HOLDER. . .
			87	EP154	GFCI DUPLEX RECEPTACLE 20 AMP			. . . 3)NOZZLE HOLDER W/GROMETS
40	KV036	SHEAVE 3BK36 x 1" (SCU35005V)	88	ECF10	CIRCUIT BREAKER 15 AMP*	131	DH060	HOSE 3/8 x 50' 5000psi BLU/GRY 25
	KV046	SHEAVE 3TB46 (SCU35006HQ, KQ)	89	EC410	ROCKER SWITCH 110V RED SPST	132	VS030	PRESSURE SWITCH 4000 1/4" PR16