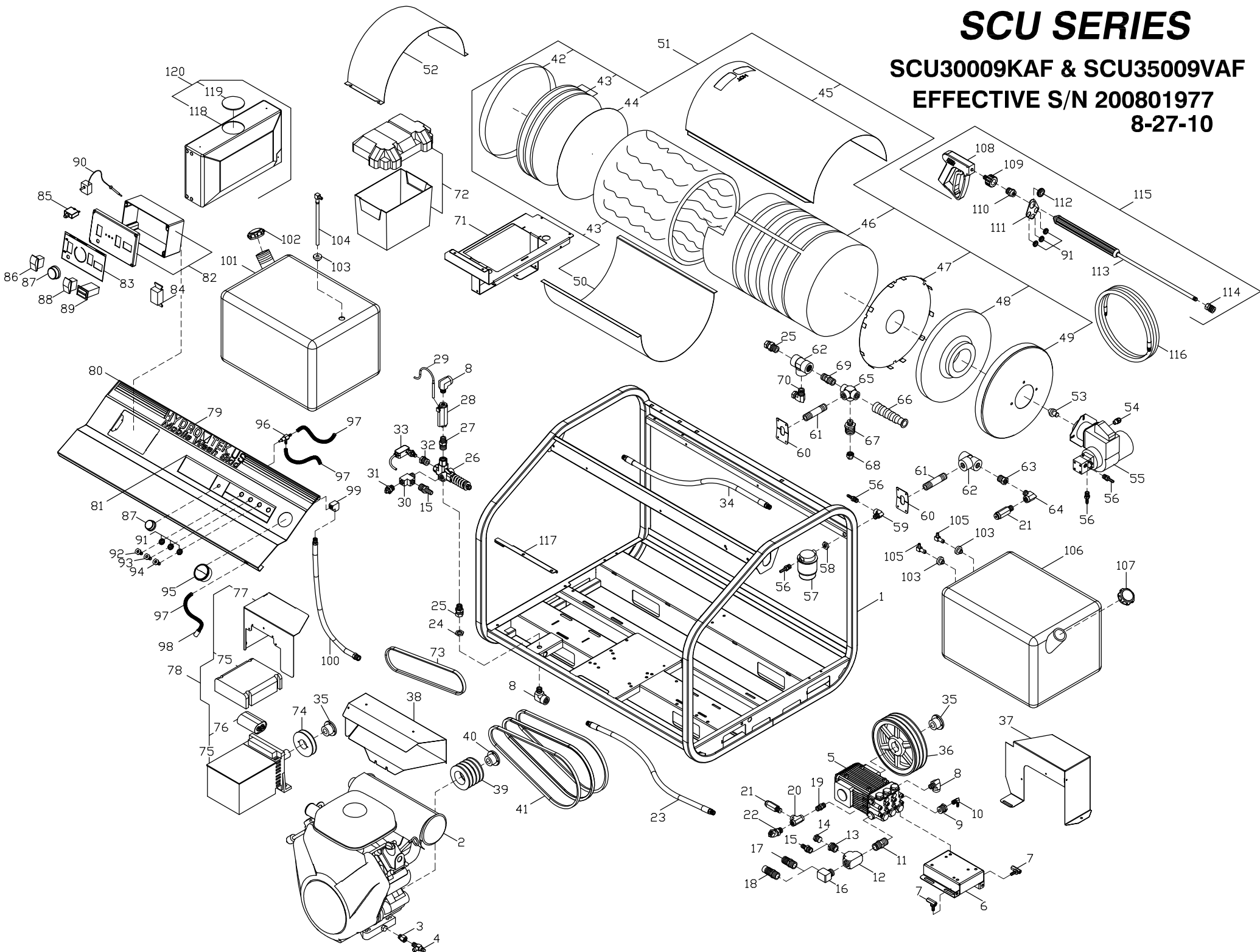


SCU SERIES

SCU30009KAF & SCU35009VAF

EFFECTIVE S/N 200801977

8-27-10



SCU30009KAF & SCU35009VAF PARTS LIST

S/N200801977

27-Aug-10

1	HSC14	SCU FRAME 14 STAINLESS (2008)	40	KSP23	BUSHING P1 x 1 7/16 (SCU3009KAF)	82	HSC51	LASER CUT SC BOX ASM/TOP AND BOTTOM
2	MK250	ENGINE 25HP KOHLER W/MUFFLER (SCU3009KAF)		KSP18	BUSHING P1 x 1 1/8 (SCU35009VAF)	83	GLL57	LABEL; SC/SS PANEL CONTROL BOX***
	MS290	ENGINE GAS 31HP VANGAURD E/S W/MUFFLER (SCU35009VAF)				84	EP154	GFCI DUPLEX RECEPTACLE 20 AMP
3	D4060	MALE ADAPTER 3/8 BRASS	41	KSB45	BELT BX45	85	ECF10	CIRCUIT BREAKER 15 AMP*
4	MS006	OIL DRAIN VALVE 3/8 (SCU3009KAF)	42	B0028	COIL CAP FLAT SC 18" NO HOLE	86	EC410	ROCKER SWITCH 110V RED SPST
	MS007	OIL DRAIN VALVE 14mm (SCU35009VAF)	43	BN053	INSUL BLKT 50SQ' 1/2 x 24 8#25'	87	ECH70	KNOB; BLUE .25id x 1.5od
5	PG585	PUMP TSF2021 23600 @ 8.5 GPM	44	BN112	INSUL DISC RETAINER 18" SC FLAT END CAP	88	EC411	ROCKER SWITCH 110V CLEAR SPST
6	HSC40	PUMP RAIL ASSEM. SCU-2008 MODELS	45	B2315	COIL WRAP TOP W/RG 36in ASM 8/98JR	89	EM601	HOUR METER 110V
7	HPR60	PUMP RAIL BOLT	46	BC480	COIL; 4PK SCH 80 18"	90	ECH55	THERMOSTAT; 60-190F***
8	DE586	STREET ELL 1/2F X 3/8m steel	47	BN111	INSULATION DISC RETAINER 4in HOLE			
9	D1127	BUSHING 3/4M x 1/4F BRASS	48	BN054	INSULATION HEAD 18" (TOP HAT)	91	HLB09	GROMET NOZZLE HOLDER***
10	D8040	HOSE BARB 1/4 90 ELBOW*	49	B0013	COIL CAP ASM 18in 4.5id GRAINE 8/98JR	92	NQ500	NOZZLE/QDC 05 x 0* (SCU3009KAF)
			50	B2323	COIL WRAP BOTTOM ASM 12/98BL		NQ450	NOZZLE/QDC 045 x 0 (SCU35009VAF)
11	D2089	NIPPLE 3/4" BRASS				93	NQ502	NOZZLE/QDC 05 x 15 (SCU3009KAF)
12	D6120	TEE 3/4" BRASS (NOT POTTED)	51	BC491	COIL ASM 4PK SCH80 SCU (2008)		NQ452	NOZZLE/QDC 045 x 15 (SCU35009VAF)
13	D1128	BUSHING 3/4 x 1/2 BRASS	52	HSC19	BATTERY RAIN GUARD-SCU (2008)	94	NQ504	NOZZLE/QDC 05 x 40 (SCU3009KAF)
14	D1080	PLUG 1/2" BRASS	53	BZ400	FUEL NOZZLE 4.0 90B		NQ454	NOZZLE/QDC 045 x 40 (SCU35009VAF)
15	D8088	HOSE BARB 1/2" BRASS* for INLET SOAP FUNCTION	54	EWC08	STRAIN RELIEF 1/2 HEYCO (3/8)	95	UG055	GAUGE; 5000psi DUAL SCALE; PN
16	D5512	STREET ELBOW 3/4" BRASS	55	BU007	BURNER; WAYNE 110v CAP 2-4	96	VVC10	CHEMICAL MET VALVE MV-100 MOD
17	D8169	HOSE BARB 1 IN H X 3/4 P BRASS	56	D8044	BARB; HOSE; 1/4; BRASS* .312 t	97	DHB04	TUBING; CLEAR BRAIDED; 1/4
18	DJ045	ORIFICED BARB .453 3/4NPT x 1"H BARB W/NYLON ORIFICE above for INLET SOAP FUNCTION	57	BF020	FUEL FILTER; RACOR HYDRO TEK	98	VF045	STRAINER CHEMICAL W/CHECK
19	DB506	NIPPLE 3/8 STEEL	58	D7064	HEX NUT 1/4 BRASS	99	D5044	ELL 1/4 BRASS*
20	DE066	TEE 3/8 STEEL	59	DC043	STREET ELL 1/4 STEEL	100	DH128	HOSE 1/4 x 26" 5000psi HN GAUGE. HN MODULE GAUGE HOSE
21	UP137	PRESSURE RELIEF 3700psi BLACK (SCU3009KAF)	61	BC855	BURNER NIPPLE; 1/2 x 5.5 SCH80*	101	WT08R	FUEL TANK 18 GAL GAS RED
	UP045	PRESSURE RELIEF 4500+15% 500q (SCU35009VAF)	62	DE088	TEE 1/2 STEEL A105 FORGED	102	WT081	FUEL CAP; GASOLINE
22	DE606	SWIVEL 45 3/8M x 3/8F STEEL	63	DA086	BUSHING 1/2 x 3/8 STEEL	103	DFF04	FUEL TANK BUSHING 1/4
23	DH049	HOSE 1/2 x 50in 3500psi NO WIP	64	DC568	STREET ELL 3/8 STEEL	104	DF599	FUEL TANK ADAPTER W/PLASTIC TUBE
24	D7061	HEX NUT 3/8 BRASS-REMOTE UNLOADER	65	DE08S	TEE 1/2in-SPECIAL 3/8 TAP	105	DFE04	FUEL TANK ELL 1/4
25	DE568	SWIVEL, 3/8F x 1/2M STEEL	66	ECH75	HEAVY DUTY BEND RESTICTOR-B	106	WT078	FUEL TANK 18 GAL DIESEL CLEAR*
26	UU320	UNLOADER/REGULAR 4000 @ 21 GREEN SPRING	67	UPB05	ADAPTER FITTING-BURST DISC***	107	WT080	FUEL CAP; DIESEL
27	DB507	NIPPLE 3/8 x 1/2 STEEL	68	UPB80	BURST DISC 8000psi TORQUE 32-4	108	VG200	TRIGGER GUN, INSULATED 4000psi
28	VS005	FLOW SWITCH 8 @ 4200 ST5	69	DB508	NIPPLE 1/2 STEEL	109	DQ74T	M22 TWIST COUPLER 1/4" MALE
29	VS003	REED SWITCH	70	DE869	SWIVEL 3/8FS x 1/2M 90 STEEL	110	DQ74F	TWIST COUPLER 1/4 PLUG FEM-sut
30	D6588	STREET TEE 1/2" BRASS*						
31	UPT46	THERM DUMP VALVE 145F 1/2MPT	71	HB024	BATTERY BOX TRAY SCU (2008)	111	HNZ05	NOZZLE HOLDER (FOR WAND)
32	D1084	BUSHING 1/2 x 1/4 BRASS	72	HB100	BATTERY BOX ATWOOD G24 (LARGE)	112	HLB30	GROMET ; NOZZLE HOLDER***
33	VS030	PRESSURE SWITCH 4000 1/4" PR16	73	KSB38	BELT BX38	113	VW045	WAND 1/4 x 48in MOLDED GRIP
34	DH046	HOSE 1/2 x 46IN 3500psi NO WIP	74	KT045	SHEAVE BK45H	114	DQ04S	COUPLER 1/4 SOCK FEM
35	KSH19	BUSHING H24mm	75	MB020	GENERATOR 2500w LSA321L10	115	AVGH3	WAND 48" MOLDED NOZZLE HOLDER 3)NOZZLE HOLDER W/GROMETS
36	KV090	SHEAVE 3BK90H	76	MB025	CAPACITOR, GENERATOR 15MFD			
37	HSC42	PUMP BELT GUARD SCU HIGH FLOW UNITS	77	HSC20	GENERATOR BELT GUARD SCU	116	DH060	HOSE 3/8 x 50' 5000psi BLU/GRY 25
38	HS082	MUFFLER HEAT SHIELD SCU 25 KOHLER (SCU3009KAF)	78	MB052	SCU GENERATOR ASSEMBLY (2008)	117	HPR57	ADJUSTER BRKT ASM-GENERATOR SCU
	HS049	MUFFLER HEAT SHIELD SCU (SCU35009VAF)	79	HSC38	SCU CONTROL PANEL, EZ ACCESS (2008)	118	WT040	TANK, FLOAT 4 GAL HD LINEAR
39	KV054	SHEAVE 4TB42	80	GLL79	LABEL, HYDRO TEK 47.375 x 3	119	HH400	FLOAT TANK COVER HINGED
			81	GLL53	LABEL, SC OPS WARNING 4x 31"	120	WT0SC	SC WINTERIZING TANK OPTION