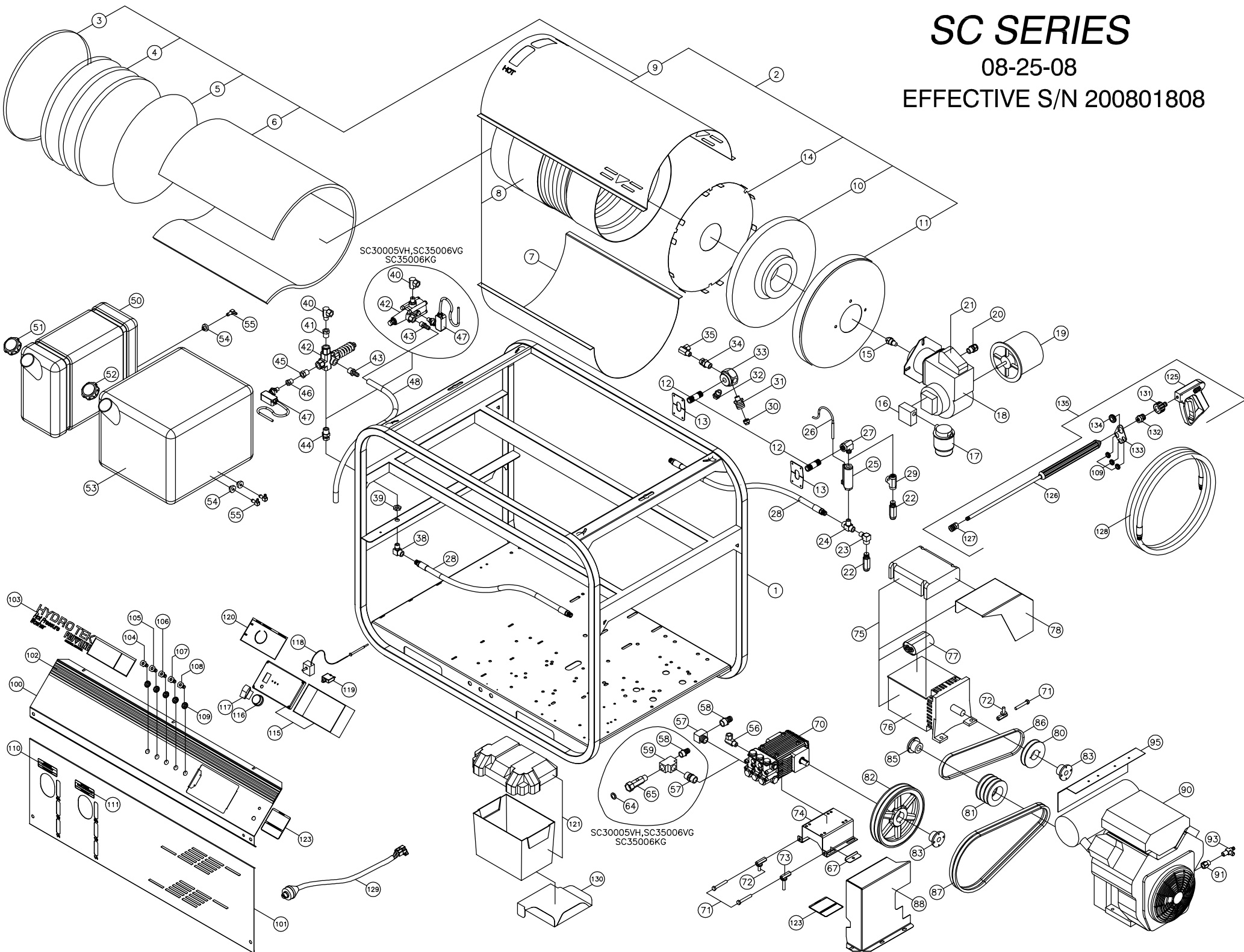


# SC SERIES

08-25-08

EFFECTIVE S/N 200801808



# SC SERIES PARTS LIST

1	HSC00	SC FRAME, P COATED PRO TEC	ALL
2	BC488	COIL ASM 4PK SCH80 W/RG COV SS(SC PRO)	ALL
3	B0028	COIL CAP FLAT SC 18" NO HOLE	ALL
4	BN053	INSUL BLKT 50SQ 1/2X24 8# 25'	ALL
5	BN112	INSULATION DISC RETAINER 18"	ALL
6	BN053	INSUL BLKT 50SQ 1/2X24 8# 25'	ALL
7	B2323	COIL WRAP BOTTOM ASM	ALL
8	BC480	COIL, 4PK SCH 80	ALL
9	B2315	COIL WRAP TOP W/RG 36in ASM	ALL
10	BN054	INSULATION HEAD (top hat)	ALL
11	B0013	COIL CAP ASM 18in 4.5id GRAINE	ALL
12	BC855	BURNER NIPPLE, 1/2x5.5 SCH80	ALL
13	B2324	COIL NIPPLE RETAINER 1/2in	ALL
14	BN111	INSULATION DISC RETNR 4in HOLE	ALL
15	BZ400	FUEL NOZZLE 4.0 90B	SC30008KAF
	BZ300	FUEL NOZZLE 3.00 90B	SC30005VH
	BZ325	FUEL NOZZLE 3.25 90B	SC40006VAF,SC40006KAF,SC40006DAF, SC40006HAF
	BZ350	FUEL NOZZLE 3.5 90B	SC35006VG, SC35006KG
16	BPA10	FUEL PUMP MOD A2VA-7116	ALL
17	BF020	FUEL FILTER, RACOR HYDRO TEK	SC30008KAF,SC40006VAF, SC40006KAF, SC40006HAF
	BF015	FUEL FILTER; INLINE	SC30005VH, SC35006VG, SC35006KG
18	BU007	BURNER, WAYNE 110V CAP 2-3	ALL
19	BM554	BURNER MOTOR 115V WAYNE	ALL
20	EWCO8	STRAIN RELIEF 1/2 HEYCO (3/8)	ALL
21	BMT10	IGNITION TRANSFORMER 115V	ALL
22	UP137	PRESSURE RELIEF 3700psi black	SC30008KAF,SC30005VH
	UP045	PRESSURE RELIEF 4500+15% red	SC35006VG, SC35006KG, SC40006VAF,SC40006KAF, SC40006HAF
23	DC568	STREET ELL 3/8	SC30008KAF, SC40006VAF,SC40006KAF, SC40006HAF
24	DE866	BRANCH TEE 3/8 STEEL	SC30008KAF, SC40006VAF,SC40006KAF, SC40006HAF
25	VS005	FLOW SWITCH 8 @ 4200 ST5	SC30008KAF, SC40006VAF,SC40006KAF, SC40006HAF
26	VS003	REED SWITCH FOR(AP500)	ALL
27	DE586	STREET ELL 1/2F X 3/8M STEEL	ALL
28	DH034	HOSE 3/8 x 34IN 5000psi NO WIP GD	ALL
29	DE066	TEE 3/8" STEEL	SC30005VH, SC35006VG, SC35006KG
30	UPB80	BURST DISC 8000psi	ALL
31	UPB05	ADAPTER FITTING-BURST DISC	ALL
32	DE566	SWIVEL 3/8 STEEL	SC30008KAF
33	HHA00	HEX MANIFOLD OUTLET 1/2 X 1/2 X 3/8 X1/2	ALL
34	DE568	SWIVEL 3/8F X 1/2M STEEL	ALL
35	DE866	SWIVEL 3/8F X 3/8M 90	SC30008KAF,SC40006KAF, SC40006HAF, SC40006VAF
38	DC568	STREET ELL 3/8	ALL
39	D7061	HEX NUT 3/8 BRASS-REMOTE UNLOADER	ALL
40	DE866	SWIVEL 3/8F X 3/8M 90 BRAZED	SC40006VAF,SC30008KAF,SC40006KAF, SC40006HAF
	DE766	SWIVEL 3/8F X 3/8F 90 STEEL	SC30005VH, SC35006VG, SC35006KG
41	DA086	BUSHING 1/2 X 3/8 STEEL	SC30008KAF
42	UU320	UNLOADER/REGUL 4000 @ 21 GREEN SPRING	SC30008KAF
	UU323	UNLOADER 4200PSI 8GPM AR	SC40006VAF,SC40006KAF, SC40006HAF
	UU371	UNLOADER 3-5 @ 3000 K7-1	SC30005VH, SC35006VG
	UU375	UNLOADER K7-2 W/BYPASS #1	SC35006KG
43	D8088	HOSE BARB 1/2 BRASS	SC30008KAF
	D8068	HOSE BARB 1/2H X 3/8 BRASS	SC40006VAF,SC30005VH,SC40006KAF, SC40006HAF
			SC35006VG, SC35006KG
44	DE568	SWIVEL 3/8F X 1/2M STEEL	SC30008KAF
	DE566	SWIVEL 3/8 STEEL	SC40006VAF,SC30005VH,SC40006KAF, SC40006HAF
			SC35006VG, SC35006KG
45	DA086	BUSHING 1/2 X 3/8 STEEL	SC30008KAF
46	DA064	BUSHING 3/8 X 1/4 STEEL	SC30008KAF, SC40006VAF,SC40006KAF, SC40006HAF
47	VS030	PRESSURE SWITCH 4000 PA/PR16]	ALL
48	DHC80	HOSE, 1/2 LO PRESS BLACK	ALL
50	WT07R	FUEL TANK 7.5 GAS RED	ALL
51	WT081	FUEL CAP, GASOLINE	ALL
52	WT080	FUEL CAP, DIESEL	ALL
53	WT078	FUEL TANK 18 DIESEL CLEAR	ALL
54	DFE04	FUEL TANK BUSHING 1/4	ALL
55	DFE04	FUEL TANK ELL 1/4	ALL
56	DE866	SWIVEL 3/8F X 3/8M 90	ALL
57	D5512	STREET ELBOW 3/4" BRASS	SC30008KAF, SC40006VAF, SC40006KAF, SC40006HAF
	D2088	NIPPLE 1/2 BRASS	SC30005VH, SC35006VG, SC35006KG
58	D8169	HOSE BARB 1in.H X 3/4P BRASS	SC30008KAF,SC40006KAF, SC40006VAF, SC40006HAF
	D8088	HOSE BARB 1/2 BRASS	SC30005VH, SC35006VG, SC35006KG
59	D6088	TEE 1/2 BRASS	SC30005VH, SC35006VG, SC35006KG
64	D0021	SCREEN WASHER GARDEN H A	SC30005VH, SC35006VG, SC35006KG
65	D009M	GARDEN H A 3in LONG 1/2 NPT	SC30005VH, SC35006VG, SC35006KG
67	HRR07	REINFORCEMENT BRACKET- PUMP RAIL	SC30008KAF, SC40006VAF, SC40006KAF, SC40006HAF
			SC35006VG, SC35006KG
70	PH803	PUMP 3000 @ 8 1450 rpm	SC30008KAF
	PH407	PUMP 5.5@4000 (BELT DRIVE)	SC40006KAF, SC40006HAF, SC40008VAF
	PH411	PUMP 4@4000 & 4.8@3000 RIGHT HAND	SC30005VH
	PG563	PUMP 5.6/3500 NICKEL PLATED	SC35006VG, SC35006KG
71	FB641	BOLT 3/8 X 2 1/2 PLD ALLTHREAD	ALL
72	HPR60	PUMP RAIL BOLT	ALL
73	HPR61	PUMP RAIL BOLT,EXTENDED LENGTH	ALL
74	HPR07	PUMP MOUNTING RAIL STAINLESS	SC30008KAF, SC40006VAF,SC40006KAF, SC40006HAF
			SC35006VG, SC35006KG
	HPR10	PUMP ANGLE RAIL AR 4000	SC30005VH

# 08-25-08 EFFECTIVE S/N 200801808

75	MB050	SC GENERATOR & GUARD ASSEMBLY	ALL
76	MB020	GENERATOR 2500w LSA321L10	ALL
77	MB025	CAPACITOR, MB020 GENERATOR	ALL
78	HS033	SC GEN BELT GUARD	ALL
80	KT040	SHEAVE BK40H	SC40006VAF,SC30008KAF,SC40006KAF, SC40006HAF
			SC35006KG
	KT036	SHEAVE BK36H	SC35006VG
	KT047	SHEAVE BK47H	SC30005VH
81	KV038	SHEAVE 3TB28	SC40006VAF,SC30008KAF,SC40006KAF, SC40006HAF
			SC35006VG, SC35006KG
	KV046	SHEAVE 3TB46	SC30005VH
82	KU100	SHEAVE 2BK100H	SC40006VAF,SC30008KAF,SC40006KAF, SC40006HAF
			SC35006VG, SC35006KG
	KU090	SHEAVE 2BK90H	SC30005VH
83	KSH19	BUSHING H24MM	ALL
85	KSP23	BUSHING P1 X 1 7/16	SC30008KAF
	KSP16	BUSHING P1 X 1	SC40006VAF,SC30005VH,SC40006KAF, SC35006KG
			SC35006VG
	KSP18	BUSHING P1 x 1 1/8	SC40006HAF
86	KSA33	BELT 5L240	SC30008KAF, SC35006KG
	KSA30	BELT 5L230	SC40006VAF,SC40006KAF, SC40006HAF, SC35006VG
	KSA32	BELT 5L250	SC30005VH
87	KSB4X	BELT BX40	ALL
88	HSC54	SC PUMP BELT GUARD KOHLER 25HP	SC30008KAF,SC40006KAF, SC35006KG
	HS036	SC PUMP BELT GUARD 16HP VAN	SC40006VAF,SC30005VH, SC35006VG
	HS078	S PUMP BELT GUARD-HONDA 20HP	SC40006HAF
90	MK250	ENGINE 25hp KOHLER W/MUFLR	SC30008KAF
	MS210	ENGINE GAS 21HP VANGAURD E/S W	SC40006VAF, SC35006VG
	MS150	ENGINE GAS 16HP VANGAURD E/S	SC30005VH
	MK200	ENGINE 20 HP KOHLER CS W/MUFFFL	SC40006KAF, SC35006KG
	MH240	ENGINE 24HP HONDA E/S W/MUFFLER	SC40006HAF
91	D4060	MALE ADAPTER 3/8 BRASS	SC30008KAF, SC40006VAF,SC40006KAF
93	MS006	OIL DRAIN VALVE 3/8	SC30005VH, SC30008KAF, SC35006VG, SC35005KG
			SC40006VAF, SC40006KAF
	MS007	OIL DRAIN VALVE 14mm	SC40006HAF
95	HS074	KOHLER MUFF/BURNER HEAT SHIELD 25HP	SC30008KAF, SC35006VG, SC40006KAF, SC40006VAF
	HS022	KOHLER MUFF/BURNER HEAT SHIELD	SC35006KG
	HS021	VANGAURD MUFF/BURNER HEAT SHIELD 16HP	SC30005VH
	HS088	MUFFLER HEAT SHIELD, 24 HONDA	SC40006HAF
100	HSC39	SCG FRONT PANEL-LABEL&P.STRIPE	SC30008KAF, SC40006VAF, SC40006KAF, SC40006HAF
	HSC22	CONTROL PANEL SC30005VH	SC30005VH, SC35006VG, SC35006KG
101	HS038	SC FUEL TANK PANEL	SC30008KAF, SC40006VAF, SC40006KAF, SC40006HAF
102	GLL72	PINSTRIPES MULTI RED (rolls=150')	ALL
103	GLL97	LABEL PRO MOBILE WASH SKID 3.0	ALL
104	NQ802	NOZZLE/QDC 08 X 15	SC30008KAF
	NQ552	NOZZLE/QDC 055 X 15"	SC40006VAF, SC40006HAF, SC40006KAF
	NQ402	NOZZLE/QDC 04 X 15	SC40006KAF
105	NQ702	NOZZLE/QDC 07 X 15	SC30008KAF
	NQ502	NOZZLE/QDC 05 X 15	SC40006VAF,SC40006KAF, SC40006HAF,SC35006VG
	NQ352	NOZZLE/QDC 035 X 15	SC35006KG
106	NQ602	NOZZLE/QDC 06 X 15	SC30008KAF
	NQ552	NOZZLE/QDC 055 X 15	SC40006KAF
	NQ402	NOZZLE/QDC 04 X 15	SC40006VAF, SC40006HAF, SC40006KAF
	NQ550	NOZZLE/QDC 055 X 0	SC30005VH,SC35006VG,SC35006KG
107	NQ452	NOZZLE/QDC 045 X 15	SC30008KAF
	NQ272	NOZZLE/QDC 027 X 15	SC40006VAF,SC40006KAF, SC40006HAF
	NQ552	NOZZLE/QDC 055 X 15	SC30005VH
108	NQ554	NOZZLE/QDC 055 X 40	SC30005VH,SC35006VG,SC35006KG
109	HLB09	GROMET NOZZLE HOLDER	ALL
110	GLL10	LABEL GASOLINE ONLY	ALL
111	GLL20	LABEL DIESEL FUEL ONLY	ALL
115	HSC51	LASER CUT SC BOX ASM/TOP AND BOTTOM	ALL
116	ECH72	KNOB, RED .25 X 1.50D	ALL
117	EC410	ROCKER SWITCH 110V RED SPST	ALL
118	ECH55	THERMOSTAT,60-190F	ALL
119	ECF10	CIRCUIT BREAKER 15 AMP	ALL
120	GLL57	LABEL,SC/SS PANEL CONTROL BOX	ALL
121	HB100	BATTERY BOX ATTWOOD G24 (LARGE)	ALL
123	GLL30	MAINTENANCE LABEL 4x4 SC,SS,SM	ALL
125	VG200	GUN VALVE 12 @ 4000 ST1500	ALL
126	VW045	WAND 1/4 x 48in MOLDED GRIP	ALL
127	DQ04S	COUPLER 1/4 SOCK FEM	ALL
128	DH057	HOSE 3/8 X 50' 4000 PSI redblk	SC30008KAF, SC35006VG, SC35006KG, SC40006VAF
			SC40006KAF, SC40006HAF
			SC30005VH
129	ESS08	HOSE 3/8" x 50' 3000psi 250F BL	SC30008KAF, SC35006KG, SC40006KAF
130	HB025	LARGE BATTERY BOX TRAY 12-03 NEW	ALL
131	DQ74T	M22 TWIST COUPLER 1/4" MALE	ALL
132	DQ74F	TWIST COUPLER 1/4" PLUG FEM-SUT	ALL
133	HNZ05	NOZZLE HOLDER (FOR WAND)	ALL
134	HLB30	GROMET; WAND 1"	ALL
135	AVGH3	WAND ASSEM 48" MOLDED GRIP W/NOZZLE HOLDER	ALL
	ABMAG	OPERATION PACK GENERAL PRO	ALL