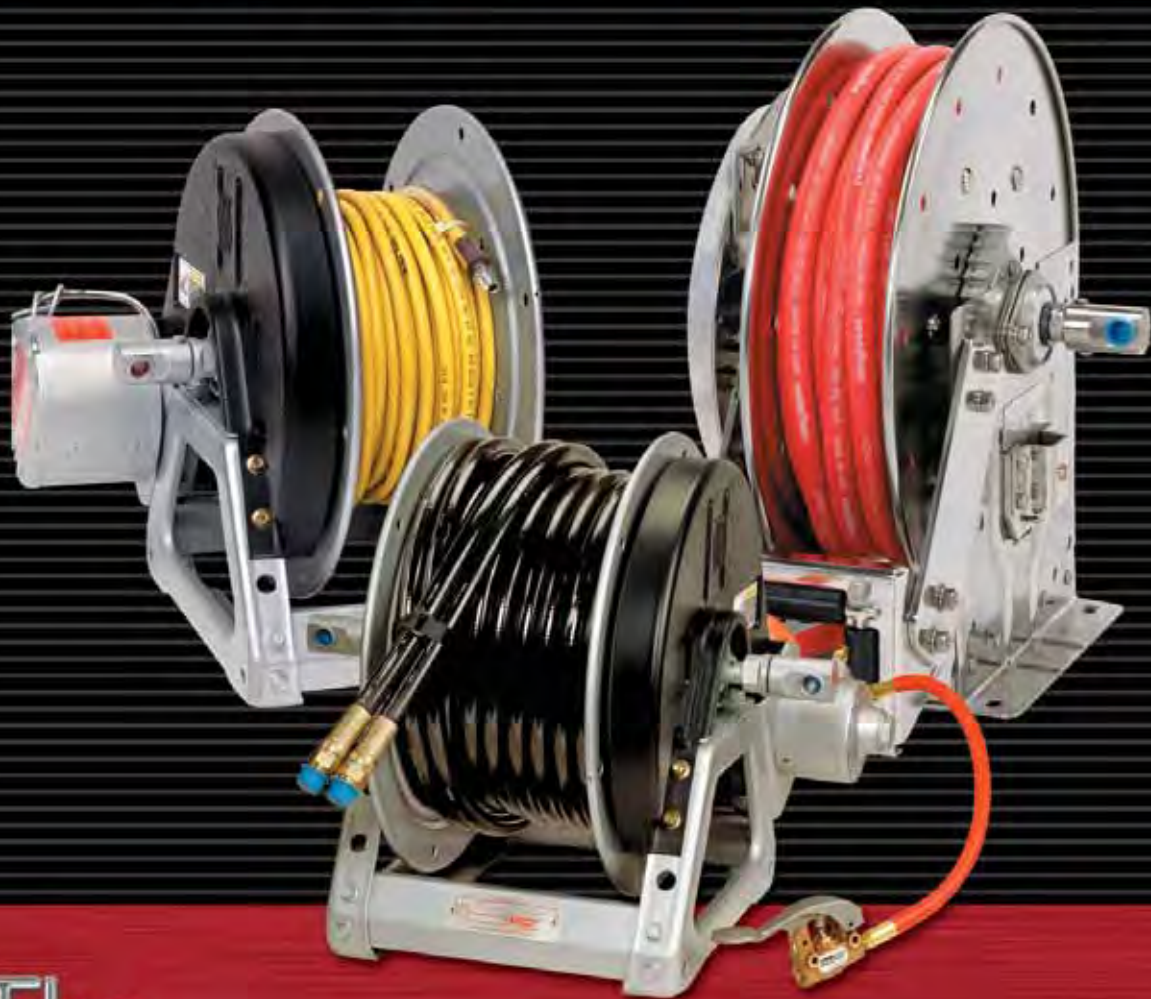


FAMILY OWNED AND OPERATED SINCE 1933



Industrial Hose Reels



The
Hannay
Way

Washdown • Chemical Transfer • Potable Water
Food Processing • Pharmaceuticals & Cosmetics • Fueling
Fire Protection • Dairy Operations • Bottling Plants

www.hannay.com

Pride in workmanship • Reels built to order • Consistent quality • Service with integrity • Value for your dollar

CONTENTS

Hannay hose reels come in all sizes and capacities.

Hannay Reels is the leading manufacturer of high quality hose and cable reels for most every conceivable application. This catalog describes and gives specifications on our most popular hose reels. If you don't see what you're looking for, give us a call and we will help you meet your needs.

Reel Selector Chart

Reel Type	I.D. Hose Sizes	Page
Hose Assemblies	1/4"–1-1/2"	3
Hannay Reels Policies Our Guarantee, Service Policy, Paint Notice, Return Goods Policy		4
Spring Rewind Reels		
Series N500 (high pressure)	1/4" & 3/8"	5
Series N600/600 (dual hose)	1/4"–3/4" Dual	6-7
Series N700/700	3/8" & 1/2"	8-9
Series N800/800	3/4" & 1"	10-11
Series 900	1-1/4" & 1-1/2"	12
Series AG	1/4" & 1-1/2"	13-14
Compact Manual Rewind Reels		
Series 1000	1/4"–3/8"	15
Power and Manual Rewind Reels		
Series 1500, 1800	1/4"–3/4"	16-17
Series 2000 (dual hose), G2000	1/4"–1/2" Dual	18-19
Series 3000, 3500 (manual only)	3/4"–1-3/4"	20-21
Series 4000, G4100	3/4"–1"	22-23
Series 6000	1/2"–1"	24-25
Series 7000 (dual hose)	3/4"–1" Dual	26
Series 7500	1"–1-1/2"	27
Series 8000	1-1/2"–2"	28-29
Series 9000	2"–3"	30-31
Portable Hose Reels		
Series 1100, AT1200	3/8"–1"	32
Storage Reels		
Series C1150, ATC1250	16/3–10/3	33
Series C1500, C3200	1/4"–1-1/2"	34-35

Lube Reel Chart

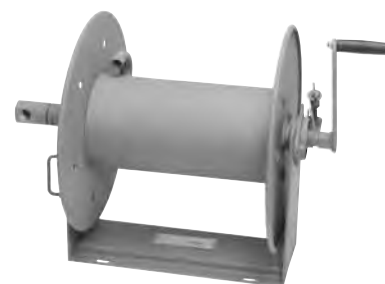
Reel Type	I.D. Hose Sizes	Page
Spring Rewind Reels		
Series N500 (high pressure)	1/4" & 3/8"	5
Series N700	3/8" & 1/2"	8
Series N800	3/4" & 1"	10
Series 900	1-1/4" & 1-1/2"	12
Power Rewind Reels		
Series 7500	1"–1-1/2"	27

Mounting Hole Sizes

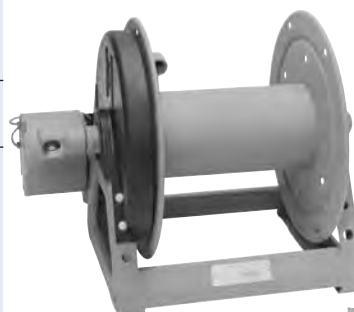
N Series Reels — 7/16" x 7/8" running front to back
Pressed Frame Reels — 7/16" x 7/8" running left to right
Series 1000 — 5/16" x 7/8"
Series 1500, 1800, 4000, 2000 — 13/32" round holes



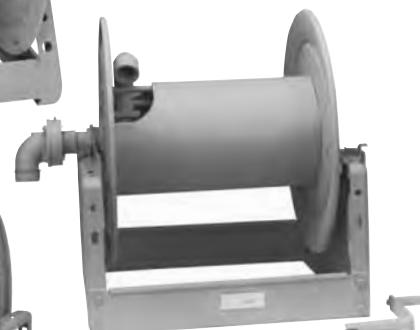
Spring Rewind Reels



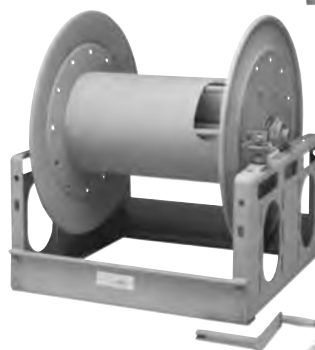
Compact Manual Rewind Reels



Power Rewind Reels



Manual Rewind Reels



Storage Reels



4300-AL Aluminium Hand Cart is available for most models in Series 3000, 3500 and C3200

HOSE ASSEMBLIES

Complete Reel Packages are also available. For further information refer to our form H-0001-Pkg.

Hose Assemblies

Hannay offers a wide selection of low, medium, and high pressure hose assemblies for a variety of applications such as general purpose air and water, petroleum products, hydraulics, oxygen/acetylene, breathing air, potable water, steam, and pressure washing. These assemblies are available with inside diameters ranging from 3/16" to 3", working pressures from 100 psi to 10,000 psi (7 bar to 689 bar), working temperatures from -65° F to +450° F (-54° C to +232° C), and in most cases at least a 4:1 burst pressure ratio. Hannay also offers 24" flexible connectors for most reels. Please contact our factory with your specific need.

Low Pressure Hose

Our low pressure hose assemblies with inside diameters of 1/4", 3/8", 1/2", and 3/4" have working pressures from 300 psi to 350 psi (21 bar to 24 bar), working temperatures from -40° F to +212° F (-40° C to +100° C) depending on fluid, have a synthetic rubber core and cover with a one textile braid reinforcement. They are designed for use with petroleum-based hydraulic fluids and lubricating oils, water, water/glycol, water/oil emulsion hydraulic fluids, and air. Our low pressure hose assemblies with inside diameters of 1", 1-1/4", and 1-1/2" have working pressures of 200 psi (14 bar), working temperatures from -40° F to +180° F (-40° C to +82° C). They have a blended nitrile core, a neoprene cover, and four spiral reinforcements for the 1" and an EPDM core and cover with a two textile braid reinforcement for the 1-1/4" and 1-1/2" (also available in 1"). The nitrile/neoprene hose is designed for transfer of air and water. The EPDM hose covers these applications, plus it is good for conveying water-based liquid fertilizers, pesticides and other products.

Medium Pressure Hose

Our medium pressure hose assemblies with inside diameters of 1/4", 3/8", and 1/2" have working pressures from 2000 psi to 2750 psi (138 bar to 190 bar), working temperatures from -40° F to +250° F (-40° C to +121° C), and have a synthetic rubber core and cover with one braid of high tensile steel wire for reinforcement. They are designed for use with petroleum-based hydraulic fluids and lubricating oils, water, water/glycol, water/oil emulsion hydraulic fluids, and air.

High Pressure Hose

Our high pressure hose assemblies with inside diameters of 1/4", 3/8", and 1/2" have working pressures from 3500 psi to 5000 psi (241 bar to 345 bar), working temperatures from -40° F to +257° F (-40° C to +125° C), depending on fluid, have a synthetic rubber core and cover with two braids of high tensile steel wire separated by a synthetic layer for reinforcement. They are designed for use with petroleum-based hydraulic fluids and lubricating oils, water, water/glycol, water/oil emulsion hydraulic fluids, and air.

Twin Oxygen/Acetylene Hose

Our oxygen/acetylene grade R hose assemblies with inside diameters of 1/4" and 3/8" have working pressures of 200 psi (14 bar), working temperatures of -40° F to +200° F (-40° C to +93° C), or have an EPDM core and cover with one textile braid reinforcement. This hose is designed for oxygen/acetylene only. Grade T oxygen/acetylene, propane, MAPP gas hose is also available. For oxygen/acetylene reels see Hannay Welding Catalog H-0408-W.

Twin Hydraulic Hose

Our twin hydraulic hose assemblies with inside diameters of 1/4", 3/8", and 1/2" have working pressures from 2000 psi to 5000 psi (138 bar to 345 bar), working temperatures from -40° F to +212° F (-40° C to +100° C), have a polymeric core, abrasion-resistant urethane cover, and braided fiber reinforcement. This hose is not only designed for hydraulic and pneumatic circuits, but has a wide chemical compatibility that covers applications such as agricultural sprays, urethane foam mixers, and fire resistant fluids.

Note: All spring rewind reels complete with hose are supplied with appropriate hose stop.
(See Ordering & Accessory Guide.)

REEL POLICIES

Our Guarantee and Service Policy

Equipment manufactured by Hannay Reels, Inc. is guaranteed for two years from date of shipment when installed according to our instructions, given proper care, and used for the purpose for which it is designed.

Equipment which proves to be defective upon our inspection will be replaced free of charge, including freight to the customer. Our responsibility ceases upon delivery to any common carrier and we do not, unless previously instructed, insure shipments beyond point of delivery to such carrier. No material will be accepted for return without a return goods authorization. No allowance will be made for labor charges incurred in making exchanges, replacements or repairs.

Components (including hose and cable) which are manufactured by other vendors will be subject to the warranty terms of their own manufacturers. Also excluded from the general guarantee are normal wear items (including seals, motor brushes, and paint finish).

We reserve the right to modify or alter materials, dimensions, design and construction when necessary to improve the performance of the reel and/or accessories, or to meet delivery requirements.

Failure to use a properly sized circuit breaker with any electric rewind motor will void warranty on motor.

Failure to use a flexible connector with any live hose reel will void warranty on swivel joint.

We expressly disclaim any liability for damage or injuries resulting from the use, operation, service, maintenance or failure of equipment.

Paint Notice

To meet the requirements and performance of vehicle and OEM apparatus paints we recommend our reels be painted with the same or equal paint as used on the specific apparatus the reel is being mounted on.

Hannay Reels will supply any model or custom reel or part with an automotive primer or rust preventative oil finish upon request, allowing application of final coating at your facility. Or at additional cost Hannay can prime / pre-paint all material before final assembly.

In today's regulatory environment this would be the most cost-effective way to meet your finishing standards.

Optional finishes are available for various environmental conditions and should be discussed with the factory.

Standard finish is oven cured enamel. **High performance finishes for demanding and corrosive environments are available at an additional cost. Consult factory for specific requirements.**

Return Goods Policy

All Hannay Reels are built to order. The parts and components are ordered or placed into production as soon as the order is written.

In order to keep the number of returned goods at a minimum, we ask that you use the Hannay Reels Order Worksheet and/or Accessories Order Form when specifying reels with us. These forms can be found in our Ordering and Accessory Guide, H-0415-OA. **Be sure to include any size and/or weight limitations for your installation.**

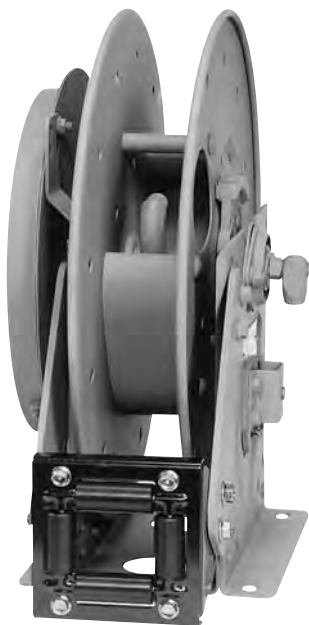
In the event that an item does need to be returned for credit, repair or replacement, prior approval **must** be obtained from Hannay Reels, Inc. Upon your request, we will fax a Return Goods Authorization form. A signed copy of this form **must** accompany the material when returned to us.

All material must be returned prepaid, unless otherwise noted on our Return Goods Authorization. No return will be accepted that has been damaged due to improper return packaging, tampered with or altered from its original condition. **Equipment specially built to customer specifications and requirements is not subject to cancellation or returnable for credit under any conditions.**

Our restocking and handling fee is a **MINIMUM** of 25% for standard catalog reels and parts.

No material will be accepted for credit when returned without permission. Orders for equipment incorporating variations from catalog listed items are special and are not subject to return.

No allowance will be made for labor or mileage charges incurred in making exchanges, replacements, or repairs.



Standard
Configuration
Shown

For:

- Chassis Grease
- Hydraulics
- Air/Water

N500

HIGH PRESSURE SPRING REWIND REELS

To handle single 1/4" or 3/8" I.D. hose.

- Compact frame and narrow base.
- Non sparking ratchet assembly.
- Declutching arbor to prevent damage from reverse winding.
- Standard inlet 90° swivel joint 1/4" female NPT threads. 3/8" female NPT threads are optional and **must be specified**.
- Standard outlet is 1/4" female NPT threads. 3/8" female NPT threads are optional and **must be specified**.
- Other threads can be furnished and **must be specified**.
- Standard pressure of 10,000 psi (689 bar), product temperatures from -40° F to +250° F (-40° C to +121° C). Optional 1/4" 3000 psi (207 bar), or 3/8" 3000 psi (207 bar) or 8000 psi (552 bar) are available upon request.
- 4-way roller assembly.
- Constant Tension is available – consult factory.

Parts Drawing – ISO 92

Model Number	Hose Capacity of Reel feet m.			Approx.Weight lb. kg.			Standard Roller Assy	Reel Dimensions*** inches mm.			
	I.D. (in) I.D. (mm)	1/4" 6	3/8" 10	NET	UPS/ FedEx SHIP Wt.	Freight SHIP Wt.		C	E	G	H
	O.D. (in) O.D. (mm)	5/8" 16	3/4" 19								
N515-14-16-8L		25 8	25 8	48 22	64* 29	83 38	N203	8 203	17.62 448	16.25 413	9.12 232
N515-16-17C		35 11	35 11	51 23	67* 30	86 39	N203	10.5 267	18.5 470	17 432	9.12 232
N515-19-20J		50 15	50 15	63 29	81* 37	98 44	N203	10.5 267	20.75 527	20 508	10.62 270
N515-23-24J		75 23	75 23	75 34	92* 42	110 50	N203	15.5 394	23.75 603	24 610	12.62 321

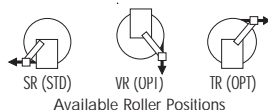
Notes:

1. Specifications subject to change.
2. Reel models and capacities shown are for standard drag applications; for vertical lift applications consult factory.
3. Other sizes, from standard components, available on request.
4. **Finish:** refer to Page 4.
5. **Be sure to check dimensions and weights prior to ordering.**

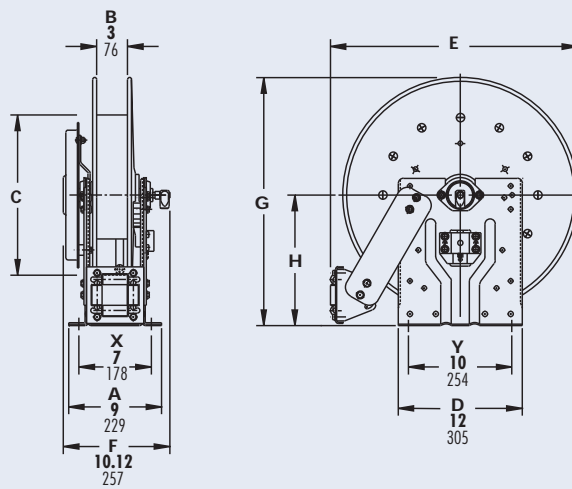
NOTICE: A Flexible Connector must be used between the inlet pipe and the inlet swivel joint.

* Dimensional weight may apply when shipped as a parcel package (via FedEx or UPS Ground).

*** x,y indicate mounting holes. See page 2



Available Roller Positions



N600

SPRING REWIND DUAL HOSE REELS

To handle dual 1/4" through 1/2" I.D. hose.

- Narrow frame and compact mounting base.
 - Non sparking ratchet assembly.
 - Declutching arbor to prevent damage from reverse winding.
 - Standard inlets 90° balanced pressure swivel joints 1/2" female NPT threads.
 - Standard outlets 1/2" female NPT threads.
 - Pressures to 3000 psi (207 bar)
 - Temperatures from -60° F to +250° F (-51°C to +121°C).
 - Consult factory for other pressures & temps.
 - 4-way roller assembly.
 - Constant Tension is available – consult factory.
 - Reels for use with oxygen/acetylene.
- See Series N400 Hannay Reels Welding Catalog H-0408-W.



Optional
TR roller
position
shown

For:

- Hydraulics
- Air/Water

- Spray Painting

Parts Drawing – ISO 80

Model Number	Hose Capacity of Reel <div>feet m.</div>				Approx. Weight <div>lb. kg.</div>			Standard Roller Assy	Reel Dimensions*** <div>inches mm.</div>							
	I.D. (in) I.D. (mm)	1/4" 6	3/8" 10	1/2" 13	NET	UPS/ FedEx	Freight		A	B	C	E	F	G	H	X
	O.D. (in) O.D. (mm)	5/8" 16	3/4" 19	7/8" 22		SHIP Wt.	SHIP Wt.									
N615-19-20C		2/35 2/11	2/35 2/11	2/20 2/6	63 29	74* 34	98 44	N203	9 229	3 76	10.5 267	20.75 527	11.75 298	20 508	10.62 270	7 178
N617-19-20J		2/50 2/15	2/50 2/15	2/25 2/8	66 30	84* 38	101 46	N205	11 279	5 127	10.5 267	20.75 527	13.75 349	20 508	10.62 270	9 229
N615-23-24B		2/65 2/20	2/60 2/18	2/30 2/9	87 40	104* 47	122 55	N203	9 229	3 76	10.5 267	23.75 603	11.75 298	24 610	12.62 321	7 178
N617-25-26-15.5B		2/75 2/23	2/75 2/23	2/50 2/15	93 42	– –	128 58	N205	11 279	5 127	15.5 394	25.25 641	13.75 349	26 660	13.62 346	9 229
N617-25-26-15.5A		2/100 2/31	2/85 2/26	– –	120 54	– –	155 70	N205	11 279	5 127	15.5 394	25.25 641	14.5 368	26 660	13.62 346	9 229

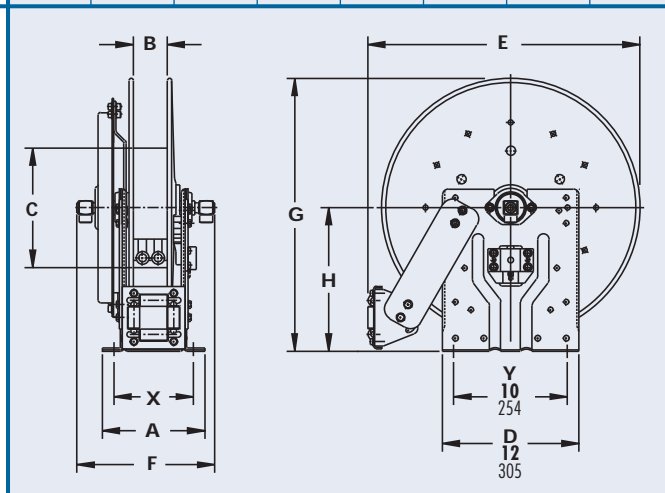
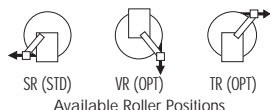
Notes:

1. Specifications subject to change.
2. Reel models and capacities shown are for standard drag applications; for vertical lift applications consult factory.
3. Other sizes, from standard components, available on request.
4. **Finish:** refer to Page 4.
5. **Be sure to check dimensions and weights prior to ordering.**

NOTICE: A Flexible Connector must be used between the inlet pipe and the inlet swivel joint.

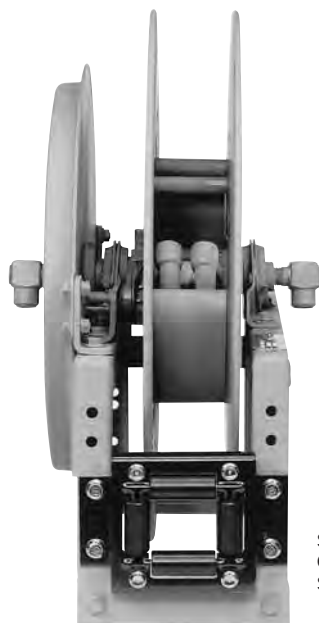
* Dimensional weight may apply when shipped as a parcel package (via FedEx or UPS Ground).

*** x,y indicate mounting holes. See page 2



For hydraulic tool circuit applications full flow swivels w/viton seals are recommended (add 2.25 to "F" dim in chart)

600



Standard Configuration Shown

SPRING REWIND DUAL HOSE REELS

To handle dual 1/4" through 3/4" I.D. hose.

- Rollformed channel frame for heavy duty applications.
 - Non sparking ratchet assembly.
 - Decutching arbor to prevent damage from reverse winding.
 - Standard inlets 90° balanced pressure swivel joints 1/2" female NPT threads. (1" inlet available).
 - Standard outlets 1/2" female NPT threads. (3/4" outlet available).
 - Pressures to 3000 psi (207 bar)
 - Temperatures from -60° F to +250° F (-51°C to +121°C).
 - Consult factory for other pressures & temps.
 - 4-way roller assembly.
 - Constant Tension is available – consult factory.
 - Reels for use with oxygen/acetylene.
- See Series N400 Hannay Reels Welding Catalog H-0408-W.

For:

- Hydraulics
- Air/Water
- Spray Painting

Parts Drawing – ISO 8

Model Number	Hose Capacity of Reel <div>feet m.</div>					Approx. Weight <div>lb. kg.</div>		Standard Roller Assy	Reel Dimensions*** <div>inches mm.</div>										
	I.D. (in) I.D. (mm)	1/4" 6	3/8" 10	1/2" 13	3/4" 19	NET	SHIP			A	B	C	D	E	F	G	H	X	Y
	O.D. (in) O.D. (mm)	5/8" 16	3/4" 19	7/8" 22	1-9/32" 33														
615-23-24B		2/65 2/20	2/60 2/18	2/30 2/9	– –	53 24	88 40	R203	8.25 210	3 76	10.5 267	23.25 591	24.38 619	13 330	23.88 607	12.5 318	3.5 89	20.25 514	
617-25-26-15.5B		2/75 2/23	2/75 2/23	2/50 2/15	– –	93 42	128 58	R205	10.25 260	5 127	15.5 394	25 635	26.12 663	15 381	25.88 657	13 343	5.5 140	22 559	
617-25-26-15.5A		2/100 2/31	2/85 2/26	– –	– –	120 54	155 70	R205	10.25 260	5 127	15.5 394	25 635	26.12 663	15.75 400	25.88 657	13.5 343	5.5 140	22 559	
† 618-30-31-15.5A		– –	– –	2/100 2/31	2/50 2/15	130 59	165 75	R206	11.25 286	6 152	15.5 394	28.5 724	29.62 752	16.75 425	31.38 797	16.75 425	6.5 165	25.5 648	

Notes:

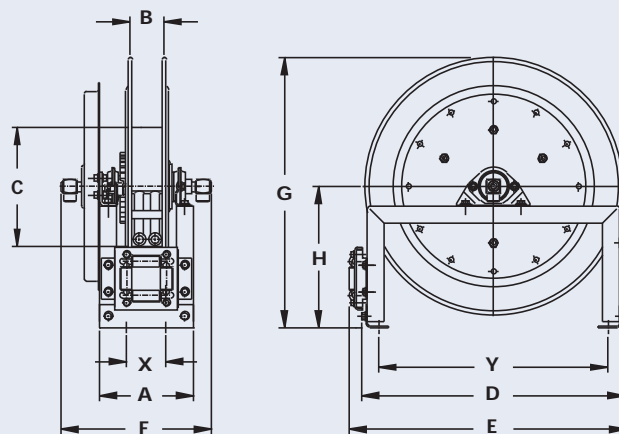
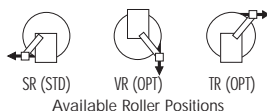
1. Specifications subject to change.
2. Reel models and capacities shown are for standard drag applications; for vertical lift applications consult factory.
3. Other sizes, from standard components, available on request.
4. **Finish:** refer to Page 4.
5. **Be sure to check dimensions and weights prior to ordering.**

NOTICE: A Flexible Connector must be used between the inlet pipe and the inlet swivel joint.

*** x,y indicate mounting holes. See page 2

NPT threads, standard outlets are 1/2" female NPT threads.

† Must specify if 1" joints and 3/4" outlet risers are required.



For hydraulic tool circuit applications full flow swivels w/viton seals are recommended (add 2.25 to "F" dim in chart)

N700

SPRING REWIND REELS

To handle 1/4" through 1/2" I.D. hose.

- Standard N Series has a narrow frame and compact mounting base.
- Non sparking ratchet assembly.
- Declutching arbor to prevent damage from reverse winding.
- Standard inlet 90° balanced pressure swivel joint 1/2" female NPT threads.
- Standard outlet 1/2" female NPT threads.
- Standard Pressures to 3000 psi (207 bar) (available up to 10,000 psi 690 bar).
- Temperatures from -60° F to +250° F (-51° C to +121° C).
- Consult factory for other pressures & temps.
- 4-way roller assembly.
- Constant Tension is available – consult factory.



Shown with
Optional TR
Roller Position

For:

- Lubrication
- Air/Water
- Assembly Operations
- Washdown
- Air Tools
- General Industrial Applications

Parts Drawing – ISO 79

Model Number	Hose Capacity of Reel <div>feet m.</div>				Approx. Weight <div>lb. kg.</div>			Standard Roller Assy	Reel Dimensions*** <div>inches mm.</div>							
	I.D. (in) I.D. (mm)	1/4" 6	3/8" 10	1/2" 13	NET	UPS/ FedEx	Freight		A	B	C	E	F	G	H	X
	O.D. (in) O.D. (mm)	5/8" 16	3/4" 19	7/8" 22		SHIP Wt.										
N716-14-16-8C		– –	25 8	25 8	52 24	64* 29	87 39	N204	10 254	4 102	8 203	17.62 448	11.25 286	16.25 413	9.12 232	8 203
N716-16-17C		– –	35 11	35 11	55 25	67* 30	90 41	N204	10 254	4 102	10.5 267	18.5 470	11.25 286	17 432	9.12 232	8 203
N716-19-20J		– –	50 15	50 15	64 29	82* 37	99 45	N204	10 254	4 102	10.5 267	20.75 527	11.25 286	20 508	10.62 270	8 203
N716-23-24-15.5G		100 30	75 23	65 20	94 43	101* 46	129 59	N204	10 254	4 102	15.5 394	23.75 603	11.25 286	24 610	12.62 321	8 203
N716-23-24-15.5J		– –	65 20	65 20	79 36	86* 39	114 52	N204	10 254	4 102	15.5 394	23.75 603	11.25 286	24 610	12.62 321	8 203
N716-25-26-15.5B		– –	75 23	75 23	90 41	– –	125 57	N204	10 254	4 102	15.5 394	25.25 641	11.25 286	26 660	13.62 346	8 203
N718-25-26-15.5G		– –	100 30	100 30	96 44	– –	131 59	N206	12 305	6 152	15.5 394	25.25 641	13.25 337	26 660	13.62 346	10 254

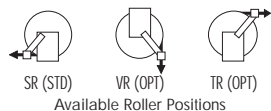
Notes:

1. Specifications subject to change.
2. Reel models and capacities shown are for standard drag applications; for vertical lift applications consult factory.
3. Other sizes, from standard components, available on request.
4. **Finish:** refer to Page 4.
5. **Be sure to check dimensions and weights prior to ordering.**

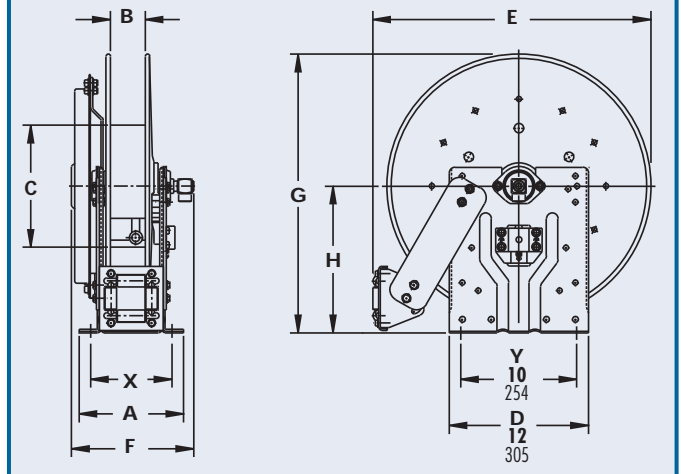
NOTICE: A Flexible Connector must be used between the inlet pipe and the inlet swivel joint.

* Dimensional weight may apply when shipped as a parcel package (via FedEx or UPS Ground).

*** x,y indicate mounting holes. See page 2



Available Roller Positions



700

SPRING REWIND REELS

To handle 1/4" through 1/2" I.D. hose.

- Rollformed channel frame for heavy-duty applications.
- Non sparking ratchet assembly.
- Declutching arbor to prevent damage from reverse winding.
- Standard inlet 90° balanced pressure swivel joint 1/2" female NPT threads.
- Standard outlet 1/2" female NPT threads.
- Standard Pressures to 3000 psi (207 bar) (available up to 10,000 psi 690 bar).
- Temperatures from -60° F to +250° F (-51° C to +121° C).
- Consult factory for other pressures & temps.
- 4-way roller assembly.
- Constant Tension is available – consult factory.



Standard Configuration Shown

For:

- Lubrication
- Air/Water
- Assembly Operations
- Washdown
- Air Tools
- General Industrial Applications

Parts Drawing – ISO 66

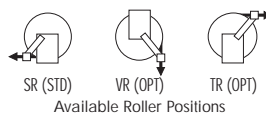
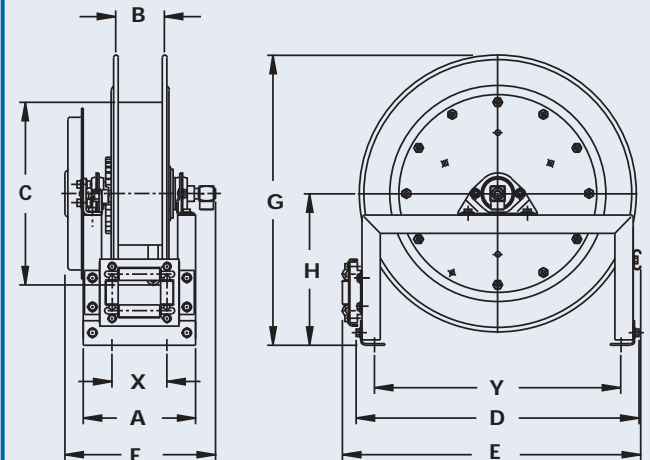
Model Number	Hose Capacity of Reel <div>feet m.</div>			Approx. Weight <div>lb. kg.</div>			Standard Roller Assy	Reel Dimensions*** <div>inches mm.</div>									
	I.D. (in) I.D. (mm)	3/8" 10	1/2" 13	NET	UPS/ FedEx	Freight		A	B	C	D	E	F	G	H	X	Y
	O.D. (in) O.D. (mm)	3/4" 19	7/8" 22		SHIP Wt.	SHIP Wt.											
716-23-24-15.5G		75 23	65 20	94 43	102* 46	129 59	R204	9.25 235	4 102	15.5 394	23.25 591	24.38 619	12.75 324	23.88 607	12.5 318	4.5 114	20.25 514
716-23-24-15.5J		65 20	65 20	79 36	86* 39	114 52	R204	9.25 235	4 102	15.5 394	23.25 591	24.38 619	12.75 324	23.88 607	12.5 318	4.5 114	20.25 514
716-25-26-15.5B		75 23	75 23	90 41	– –	125 57	R204	9.25 235	4 102	15.5 394	25 635	26.12 663	12.75 324	25.88 657	13.5 343	4.5 114	22 559
718-25-26-15.5G		100 30	100 30	96 44	– –	131 59	R206	11.25 286	6 152	15.5 394	25 635	26.12 663	14.75 375	25.88 657	13.5 343	6.5 165	22 559
718-30-31-20D		150 46	125 38	127 58	– –	162 73	R206	11.25 286	6 152	20 508	28.5 724	29.62 752	15.5 394	31.38 797	17 432	6.5 165	25.5 648

Notes:

1. Specifications subject to change.
2. Reel models and capacities shown are for standard drag applications; for vertical lift applications consult factory.
3. Other sizes, from standard components, available on request.
4. **Finish:** refer to Page 4.
5. **Be sure to check dimensions and weights prior to ordering.**

NOTICE: A Flexible Connector must be used between the inlet pipe and the inlet swivel joint.

*** x,y indicate mounting holes. See page 2



N800

SPRING REWIND REELS

To handle 3/4" or 1" I.D. hose.

- Standard N series has a narrow frame and compact mounting base.
- Non sparking ratchet assembly.
- Declutching arbor to prevent damage from reverse winding.
- Standard inlet 90° balanced pressure swivel joint 1" female NPT threads.
- Standard outlet 1" female NPT threads.
- Pressures to 1000 psi (69 bar).
- Temperatures from -40° F to +250° F (-40° C to +121° C).
- Consult factory for other pressures & temps.
- 4-way roller assembly
- Constant Tension is available – consult factory.



Optional
TR roller
position
shown

For:

• Fuel Dispensing
(Consult Factory)

• Waste Oil Evacuation
• Air/Water

Parts Drawing – ISO 81

Model Number	Hose Capacity feet m.			Approx. Weight lb. kg.			Standard Roller Assy	Reel Dimensions*** in. mm							
	I.D. (in) I.D. (mm)	3/4" 19	1" 25	NET	UPS/ FedEx	Freight SHIP Wt.			A	B	C	E	F	G	H
	O.D. (in) O.D. (mm)	1-9/32" 33	1-9/16" 40												
N816-19-20J		25 8	15 5	75 34	83* 38	110 50	N204	10 254	4 102	10.5 267	20.75 527	13 330	20 508	10.62 270	8 203
N818-23-24J		50 15	25 8	87 39	– –	122 55	N206	12 305	6 152	10.5 267	23.75 603	15 381	24 610	12.62 321	10 254
N816-25-26B		60 18	35 11	96 44	– –	131 59	N204	10 254	4 102	10.5 267	25.25 641	13 330	26 660	13.62 346	8 203
N818-25-26B		70 21	50 15	102 46	– –	137 62	N206	12 305	6 152	10.5 267	25.25 641	15 381	26 660	13.62 346	10 254

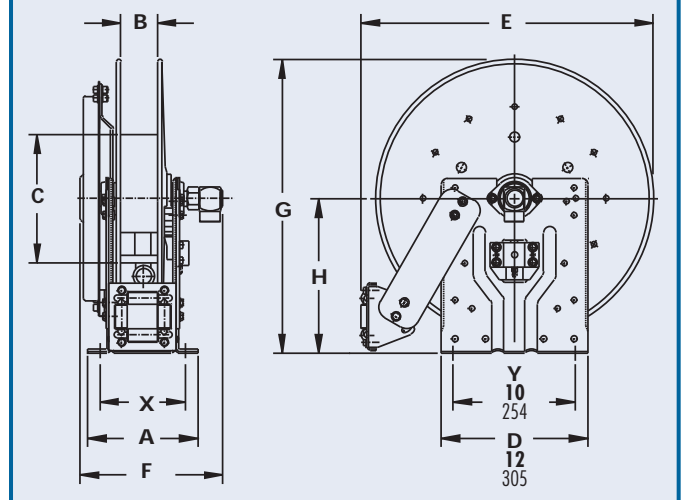
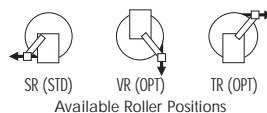
Notes:

1. Specifications subject to change.
2. Reels models and capacities shown are for standard drag applications; for vertical lift applications consult factory.
3. Other sizes, from standard components, available on request.
4. **Finish:** refer to Page 4.
5. **Be sure to check dimensions and weights prior to ordering.**

NOTICE: A Flexible Connector must be used between the inlet pipe and the inlet swivel joint.

* Dimensional weight may apply when shipped as a parcel package (via FedEx or UPS Ground).

*** x,y indicate mounting holes. See page 2



800

SPRING REWIND REELS

To handle 3/4" or 1" I.D. hose.

- Rollformed channel frame for heavy-duty applications.
- Non sparking ratchet assembly.
- Declutching arbor to prevent damage from reverse winding.
- Standard inlet 90° balanced pressure swivel joint 1" female NPT threads.
- Standard outlet 1" female NPT threads.
- Pressures to 1000 psi (69 bar).
- Temperatures from -40° F to +250° F (-40° C to +121° C).
- Consult factory for other pressures & temps.
- 4-way roller assembly.
- Constant Tension is available – consult factory.



Standard
Configuration
Shown

For:

- Fuel Dispensing
- Waste Oil Evacuation
- (Consult Factory)
- Air/Water

Parts Drawing – ISO 42

Model Number	Hose Capacity <div>feet m.</div>			Approx. Weight <div>lb. kg.</div>		Standard Roller Assy	Reel Dimensions*** <div>in. mm</div>									
	I.D. (in) I.D. (mm)	3/4" 19	1" 25	NET	SHIP		A	B	C	D	E	F	G	H	X	Y
	O.D. (in) O.D. (mm)	1-9/32" 33	1-9/16" 40													
818-23-24J		50 15	25 8	87 39	122 55	R206	11.25 286	6 152	10.5 267	23.25 591	24.38 619	15.5 394	23.88 607	12.5 318	6.5 165	20.25 514
816-25-26B		60 18	35 11	96 44	131 59	R204	9.25 235	4 102	10.5 267	25 635	26.12 663	13.5 343	25.88 657	13.5 343	4.5 114	22 559
818-25-26B		70 21	50 15	102 46	137 62	R206	11.25 286	6 152	10.5 267	25 635	26.12 663	15.5 394	25.88 657	13.5 343	6.5 165	22 559
820-25-26-10.5A		85 26	75 23	131 59	166 75	R308	13.25 337	8 203	10.5 267	25 635	27 686	18.25 464	25.88 657	13.5 343	8.5 216	22 559
820-30-31-10.5A		– –	100 30	137 62	172 78	R308	13.25 337	8 203	10.5 267	28.5 724	30.5 775	18.25 464	31.38 797	17 432	8.5 216	25.5 648
820-30-31-15.5A		100 30	– –	145 66	180 82	R308	13.25 337	8 203	15.5 394	28.5 724	30.5 775	18.25 464	31.38 797	17 432	8.5 216	25.5 648

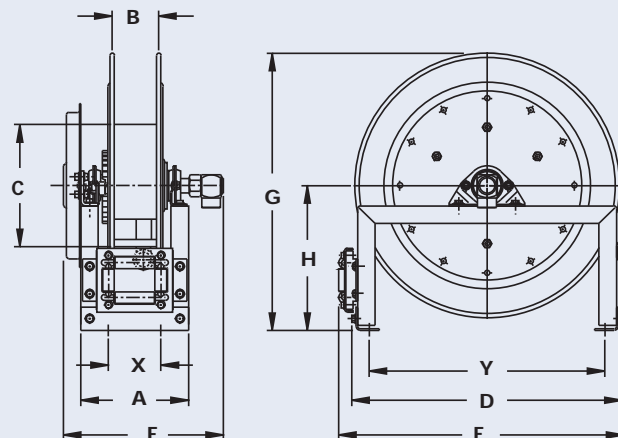
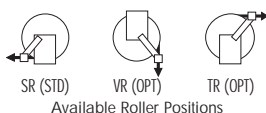
Notes:

1. Specifications subject to change.
2. Reels models and capacities shown are for standard drag applications; for vertical lift applications consult factory.
3. Other sizes, from standard components, available on request.
4. **Finish:** refer to Page 4.
5. **Be sure to check dimensions and weights prior to ordering.**

NOTICE: A Flexible Connector must be used between the inlet pipe and the inlet swivel joint.

* Dimensional weight may apply when shipped as a parcel package (via FedEx or UPS Ground).

*** x,y indicate mounting holes. See page 2

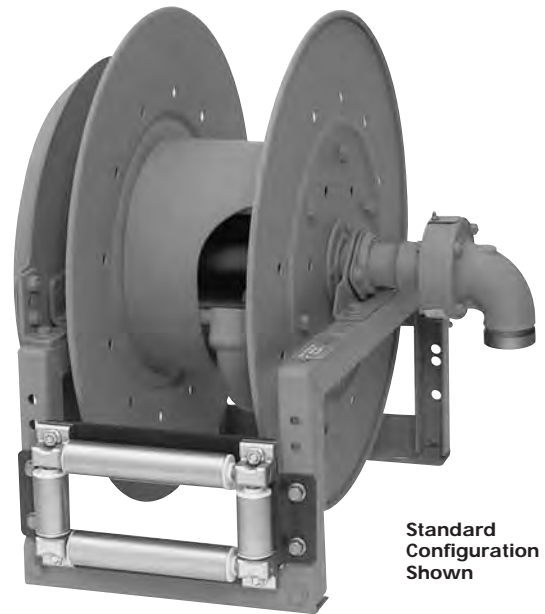


900

SPRING REWIND REELS

To handle 1-1/4" or 1-1/2" I.D. hose.

- Rollformed channel frame construction.
- Non sparking ratchet assembly.
- Declutching arbor to prevent damage from reverse winding.
- Standard inlet 90° swivel joint 1-1/2" female NPT threads and 2" victaulic groove.
- Standard outlet 1-1/2" female NPT threads.
- Pressures to 600 psi (41 bar)
- Temperatures from -60° F to +175° F (-51° C to +79° C).
- Consult factory for other pressures & temps.
- 4-way roller assembly.
- Constant Tension is available – consult factory.



Standard
Configuration
Shown

For:

- Bulk Transfer
- Fuel Dispensing
(Consult Factory)

- Suction/Discharge
(Consult Factory)

Parts Drawing – ISO 29

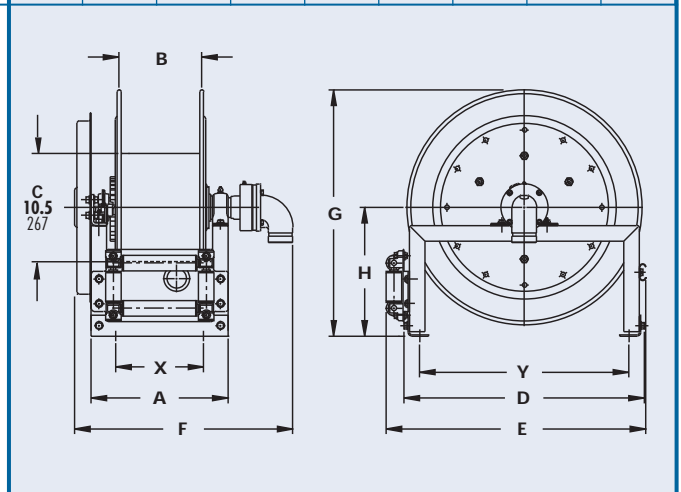
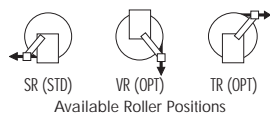
Model Number	Hose Capacity of Reel <div>feet</div> <div>m.</div>			Weight <div>lb.</div> <div>kg.</div>		Standard Roller Assy	Reel Dimensions*** <div>inches</div> <div>mm.</div>								
	I.D. (in) I.D. (mm)	1-1/4" 32	1-1/2" 38	NET	SHIP		A	B	D	E	F	G	H	X	Y
	O.D. (in) O.D. (mm)	1-13/16" 46	2-1/16" 52												
922-23-24B		40 12	25 8	104 47	139 63	R310	15.25 387	10 254	23.25 591	25.25 641	24 610	23.88 607	12.5 318	10.5 267	20.25 514
920-25-26A		50 15	40 12	127 58	162 73	R308	13.25 337	8 203	25 635	27 686	22.75 578	25.88 657	13.5 343	8.5 216	22 559
922-30-31A		75 23	50 15	156 71	191 87	R310	15.25 387	10 254	28.5 724	30.5 775	24.75 629	31.38 797	17 432	10.5 267	25.5 648

Notes:

1. Specifications subject to change.
2. Reel models and capacities shown are for standard drag applications; for vertical lift applications consult factory.
3. Other sizes, from standard components, available on request.
4. **Finish:** refer to Page 4.
5. **Be sure to check dimensions and weights prior to ordering.**

NOTICE: A Flexible Connector must be used between the inlet pipe and the inlet swivel joint.

*** x,y indicate mounting holes. See page 2



AG

SPRING RETRACTABLE REELS WITH PATENTED AIR SPEED CONTROL GOVERNOR

To handle 1/4" through 1-1/2" I.D. hose.

Most Hannay spring reel models are available with an air governor rewind assist, which prevents the hose from winding back onto the reel too quickly. Speed is regulated by restricting air flow through an air governor attached to the rewind mechanism. The result is smooth, controlled rewind speed each and every time.

Unlike other speed control mechanisms designed for spring retractable reels, there are 3 major advantages to the Hannay design:

- 1. Highly scaleable** – The air speed control governor can be scaled up to regulate speed on even the most powerful spring reels we offer. Other designs can only work on light-duty springs.
- 2. Operates in all climates** – Because the AG series uses air flow to control speed, (and not hydraulic fluid which can change viscosity depending on temperature), the reel's rewind speed is controlled and unaffected even by cold weather.
- 3. Fully adjustable** – The end user can turn the air restrictor clockwise or counterclockwise until the optimal rewind speed is found for the application.

For further information (other than dimensions) on any of the AG series reels listed below, please go to the following pages in this catalog:

- **AG600 Series:** Go to page 7 (600 Series)
- **AG700 Series:** Go to page 9 (700 Series)
- **AG800 Series:** Go to page 11 (800 Series)
- **AG900 Series:** Go to page 12 (900 Series)



AG800



AGN800

Consult factory for specifications



Model Number	Hose Capacity of Reel feet m.								Std Roller Assy	Approx. Weight lb. kg.		Reel Dimensions*** inches mm.									
	I.D. (in) I.D. (mm)	1/4 6	3/8 10	1/2 13	3/4 19	1 25	1-1/4 32	1-1/2 38		NET	SHIP	A	B	C	D	E	F	G	H	X	Y
	O.D. (in) O.D. (mm)	5/8 16	3/4 19	7/8 22	1-9/32 33	1-9/16 40	1-13/16 46	2-1/16 52													
AG615-23-24B		2/65 2/20	2/60 2/18	2/30 2/9	-	-	-	-	AG303	117 53	152 69	9.25 235	3 76	10.5 267	23.25 591	25.25 641	14.25 362	23.88 607	12.5 318	4.5 114	20.25 515
AG617-25-26-15.5B		2/75 2/23	2/75 2/23	2/50 2/15	-	-	-	-	AG305	118 54	153 69	11.25 286	5 127	15.5 394	25 635	27 686	16.25 413	25.88 657	13.5 343	6.5 165	22 559
AG617-25-26-15.5A		2/100 2/30	2/85 2/26	-	-	-	-	-	AG305	145 66	180 82	11.25 286	5 127	15.5 394	25 635	27 686	17 432	25.88 657	13.5 343	6.5 165	22 559
AG618-30-31-15.5A		-	-	2/100 2/30	2/50 2/15	-	-	-	AG306	155 70	190 86	12.25 311	6 153	15.5 394	28.5 724	30.5 775	23 584	31.38 797	17 432	7.5 190	25.5 648
AG716-19-20J		-	50 15	50 15	-	-	-	-	AG304	101 46	136 62	10.25 260	4 102	10.5 267	18 457	20 508	14.75 375	19.75 502	10.5 267	5.5 139	15 381
AG716-23-24-15.5J		-	65 20	65 20	-	-	-	-	AG304	111 50	146 66	10.25 260	4 102	15.5 394	23.25 591	25.25 641	14.75 375	23.88 607	12.5 318	5.5 139	20.25 514
AG716-25-26-15.5B		-	75 23	75 23	-	-	-	-	AG304	115 52	150 68	10.25 260	4 102	15.5 394	25 635	27 686	14 356	25.88 657	13.5 343	5.5 139	22 559
AG718-25-26-15.5G		-	100 30	100 30	-	-	-	-	AG306	121 55	156 71	12.25 311	6 152	15.5 394	25 635	27 686	16 406	25.88 657	13.5 343	7.5 190	22 559
AG718-30-31-20D		-	150 46	125 38	-	-	-	-	AG306	152 69	187 85	12.25 311	6 152	20 508	28.5 724	30.5 775	16.75 425	31.38 797	17 432	7.5 190	25.5 648
AG818-23-24J		-	-	-	50 15	25 8	-	-	AG306	110 50	145 66	13 331	6 152	10.5 267	23.25 591	25.25 641	16.75 425	23.88 607	12.5 318	7.5 190	20.25 514
AG816-25-26B		-	-	-	60 18	35 11	-	-	AG304	121 55	156 71	10.25 260	4 102	10.5 267	25 635	27 686	14.75 375	25.88 657	13.5 343	5.5 140	22 559
AG818-25-26B		-	-	-	70 21	50 15	-	-	AG306	127 58	162 73	12.25 311	6 152	10.5 267	25 635	27 686	16.75 425	25.88 657	13.5 343	7.5 190	22 559
AG820-25-26-10.5A		-	-	-	85 26	75 23	-	-	AG308	156 71	191 87	14.25 362	8 204	10.5 267	25 635	27 686	19.5 495	25.88 657	13.5 434	9.5 241	22 559
AG820-30-31-10.5A		-	-	-	-	100 30	-	-	AG308	162 73	197 89	14.25 362	8 204	10.5 267	28.5 724	30.5 775	19.5 495	31.38 797	17 432	9.5 241	25.5 648
AG820-30-31-15.5A		-	-	-	100 30	-	-	-	AG308	170 77	205 93	14.25 362	8 204	15.5 394	28.5 725	30.5 775	19.5 495	31.38 797	17 432	9.5 241	25.5 648
AG920-25-26A		-	-	-	-	-	50 15	40 12	AG308	152 69	187 85	14.5 362	8 204	10.5 267	25 635	27 686	24 610	25.88 657	13.5 343	9.5 241	22 559
AG922-30-31A		-	-	-	-	-	75 23	50 15	AG310	181 82	216 98	16.25 413	10 254	10.5 267	28.5 724	30.5 775	26 660	31.38 797	17 432	11.5 292	25.5 648

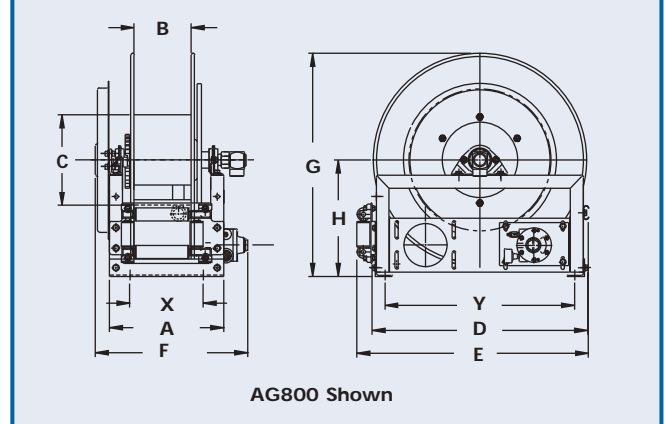
Notes:

- Specifications subject to change.
- Reels models and capacities shown are for standard drag applications; for vertical lift applications consult factory.
- Other sizes, from standard components, available on request.
- Finish:** refer to Page 4.

5. Be sure to check dimensions and weights prior to ordering.

NOTICE: A Flexible Connector must be used between the inlet pipe and the inlet swivel joint.

*** x,y indicate mounting holes. See page 2.

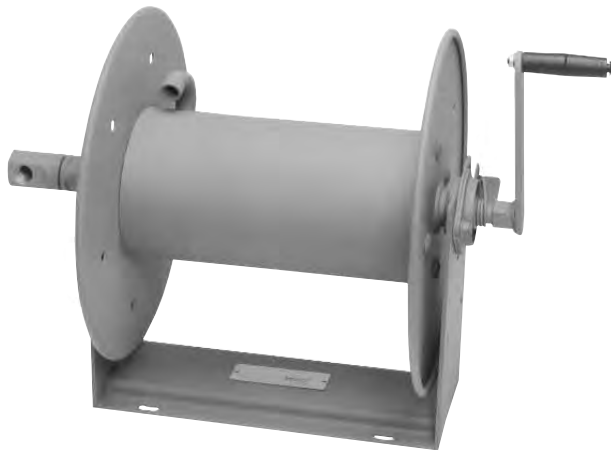


1000

COMPACT MANUAL REWIND REELS

To handle single 1/4" or 3/8" I.D. hose.

- Lightweight
- Compact
- Direct crank rewind permanently attached.
- Adjustable cam lock brake standard.
- Optional pin lock available.
- Standard inlet 90° ball bearing swivel joint 1/2" female NPT threads.
- Standard outlet 3/8" female NPT threads.
- Pressures to 3000 psi (207 bar).
- Temperatures from +20° F to +400° F (-7° C to +204° C).
- Consult factory for other pressures & temps.



Standard
Configuration
Shown

For:

- Pressure Washing
- Washdown
- Spray Operations
- Air

Parts Drawing – ISO 165

Model Number	Hose Capacity of Reel feet m.			Approx. Weight Crank Rewind lb. kg.			Reel Dimensions*** inches mm.			
	I.D. (in)	1/4"	3/8"	NET	UPS/ FedEx SHIP Wt.	Freight SHIP Wt.	A	B	F	X
	I.D. (mm)	6	10							
	O.D. (in)	5/8"	3/4"							
	O.D. (mm)	16	19							
1014-14-16		100	75	23	35*	58	8.12	6	19	4
		31	23	10	16	26	206	152	483	102
1016-14-16		150	100	24	35*	59	10.12	8	21	6
		46	31	11	16	27	257	203	533	152
1020-14-16		250	175	25	35*	60	14.12	12	25	10
		76	53	11	16	27	359	305	635	254

Notes:

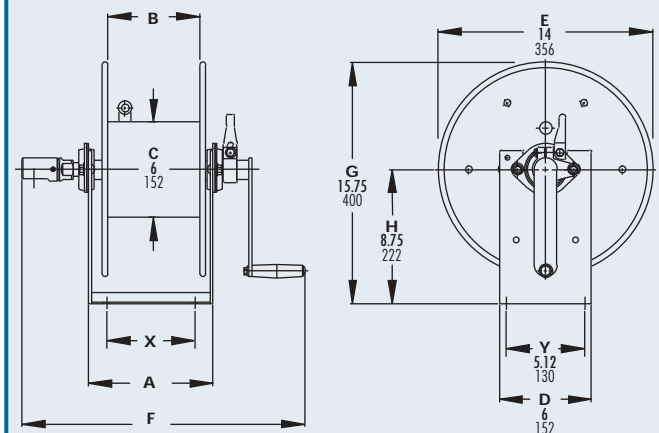
1. Specifications subject to change.
2. Other sizes, from standard components, available on request.
3. **Finish:** refer to Page 4.

4. **Be sure to check dimensions and weights prior to ordering.**

NOTICE: A Flexible Connector must be used between the inlet pipe and the inlet swivel joint.

* Dimensional weight may apply when shipped as a parcel package (via FedEx or UPS Ground).

*** x,y indicate mounting holes. See page 2



1500

MANUAL OR POWER REWIND REELS

To handle single 1/4" through 5/8" I.D. hose.

- Lightweight compact reels designed for long lengths of hose in manual and power rewind.
- Direct crank rewind is permanently attached.
- Chain and sprocket drive powered by electric, hydraulic, or compressed air motor.
- Manual reels include: cam-lock drag brake, spring actuated pin lock.
- Standard inlet 90° ball bearing swivel joint 1/2" female NPT threads.
- Standard outlet 1/2" female NPT threads.
- Optional Rollers: Specify roller position when ordering.
- Pressures to 3000 psi (207 bar)
- Temperatures from +20° F to +400° F (-7° C to +204° C).
- Consult factory for other pressures & temps.



Electric Rewind
Standard Configuration Shown

For:

- Lawn Care
- Pest Control
- Pressure Washing
- Agriculture
- Steam Cleaning



Optional External
Mounting Brackets part
no. 9906.0025.
Add 2-1/2" to the X
dimensions shown in
the chart.

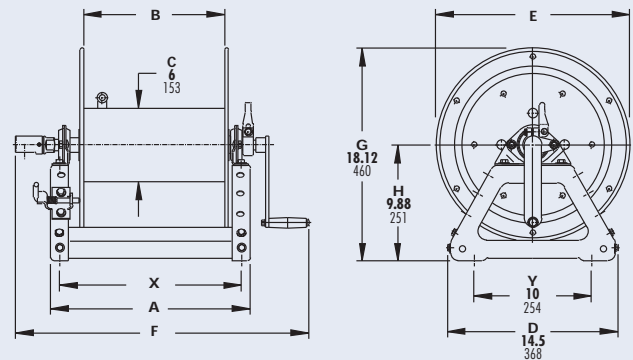
Parts Drawing – ISO 90 (power); ISO 179 (manual)

Model Number	Hose Capacity of Reel feet m.					Approx. Weight Crank Rewind ³ lb. kg.			Reel Dimensions*** inches mm.						
	I.D. (in) I.D. (mm)	1/4" 6	3/8" 10	1/2" 13	5/8" 16		UPS/ FedEx	Freight							
For Power Rewind See Note 5	O.D. (in) O.D. (mm)	5/8" 16	3/4" 19	7/8" 22	1" 25	NET	SHIP Wt.	SHIP Wt.	A	B	E CRANK	E POWER	F CRANK	F POWER	X
1514-17-18		175 53	125 38	75 23	50 15	27 12	55* 25	62 28	11 279	6 152	16.5 419	19 483	20.5 521	16.5 419	9.5 241
1520-17-18		350 107	275 84	175 53	125 38	29 13	68* 31	64 29	17 432	12 305	16.5 419	19 483	26.5 673	22.5 572	15.5 394
1526-17-18		500 152	400 122	300 91	200 61	31 14	83* 38	66 30	23 584	18 457	16.5 419	19 483	32.5 826	28.5 724	21.5 546
1530-17-18		— —	500 152	375 114	275 84	33 15	94* 43	68 31	27 686	22 559	16.5 419	19 483	36.5 927	32.5 826	25.5 648
1536-17-18		— —	— —	475 145	350 107	35 16	110* 50	70 32	33 838	28 711	16.5 419	19 483	42.5 1080	38.5 978	31.5 800

Notes:

- Specifications subject to change.
- Upon request, reels can be supplied with drum lengths other than shown.
- Weights shown in chart are for crank rewind models. ADD these amounts for power rewind models:

	Net (lbs.)	Ship (lbs.)	Net (kg.)	Ship (kg.)
Electric	18	18	8.2	8.2
Hydraulic	15	15	6.8	6.8
Air	15	15	6.8	6.8
- Dimension "F" is the overall length of standard model reels.
- When ordering power rewind models, prefix model number with:
A = Air Rewind E = Electric Rewind HD = Hydraulic Rewind
(Air rewind reels are supplied with control valve and 18" air hose; 12v and 24v DC rewind reels are supplied with switch and solenoid; 115v AC rewind reels are not supplied with switch but can be ordered separately; hydraulic rewind reels are not supplied with control valve.)
- Manual rewind available in RT or LB configurations only.
- Finish:** refer to Page 4.
- Be sure to check dimensions and weights prior to ordering.**
- Some roller options may prohibit the use of our molded chain guard.

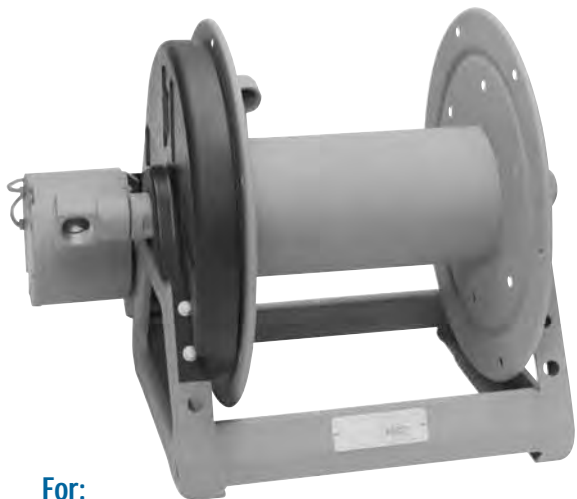


Crank Rewind Shown

NOTICE: A Flexible Connector must be used between the inlet pipe and the inlet swivel joint.

* Dimensional weight may apply when shipped as a parcel package (via FedEx or UPS Ground).

*** x,y indicate mounting holes. See page 2



1800

MANUAL OR POWER REWIND REELS

To handle single 5/8" or 3/4" I.D. hose.

- Lightweight compact reels designed for long lengths of hose in manual and power rewind.
- Direct crank rewind is permanently attached.
- Chain and sprocket drive powered by electric, hydraulic, or compressed air motor.
- Manual reels include: cam-lock drag brake, spring actuated pin lock.
- Standard inlet 90° ball bearing swivel joint 1" female NPT threads.
- Standard outlet 3/4" female NPT threads.
- Optional Rollers: Specify roller position when ordering.
- Pressures to 1000 psi (69 bar).
- Temperatures from -40° F to +250° F (-40° C to +121° C).
- Consult factory for other pressures & temps.

For:

- Air Compressors
- Washdown

Electric Rewind
Standard Configuration
Shown



Optional External
Mounting Brackets part
no. 9906.0025.
Add 2-1/2" to the X
dimensions shown in
the chart.

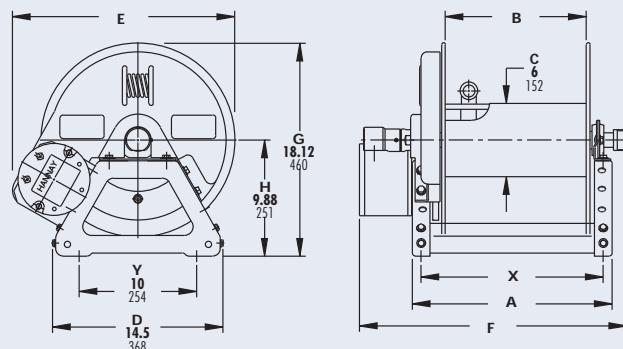
Parts Drawing – ISO 136 (power); ISO 180 (manual)

Model Number	Hose Capacity of Reel <div>feet m.</div>			Approx. Weight Crank Rewind ³ <div>lb. kg.</div>			Reel Dimensions*** <div>inches mm.</div>						
	I.D. (in) I.D. (mm)	5/8" 16	3/4" 19	NET	UPS/ FedEx	Freight	A	B	E CRANK	E POWER	F CRANK	F POWER	X
	O.D. (in) O.D. (mm)	1" 25	1-9/32" 40		SHIP Wt.	SHIP Wt.							
For Power Rewind See Note 5													
1816-17-18		75 23	50 15	28 13	55* 25	63 29	13 330	8 203	16.5 419	19 483	23.38 594	18.5 470	11.5 292
1822-17-18		150 46	100 30	30 14	83* 38	65 29	19 483	14 356	16.5 419	19 483	29.38 746	24.5 622	17.5 445
1826-17-18		200 61	125 38	32 15	83* 38	67 30	23 584	18 457	16.5 419	19 483	33.38 848	28.5 724	21.5 546
1830-17-18		275 84	150 46	33 15	94* 43	68 31	27 686	22 559	16.5 419	19 483	37.38 950	32.5 826	25.5 648
1836-17-18		350 107	200 61	36 16	110* 50	71 32	33 838	28 711	16.5 419	19 483	43.38 1102	38.5 978	31.5 800

Notes:

- Specifications subject to change.
- Upon request, reels can be supplied with drum lengths other than shown.
- Weights shown in chart are for crank rewind models. ADD these amounts for power rewind models:

	Net (lbs.)	Ship (lbs.)	Net (kg.)	Ship (kg.)
Electric	18	18	8.2	8.2
Hydraulic	15	15	6.8	6.8
Air	15	15	6.8	6.8
- Dimension "F" is the overall length of standard model reels.
- When ordering power rewind models, prefix model number with:
A = Air Rewind E = Electric Rewind HD = Hydraulic Rewind
(Air rewind reels are supplied with control valve and 18" air hose; 12v and 24v DC rewind reels are supplied with switch and solenoid; 115v AC rewind reels are not supplied with switch but can be ordered separately; hydraulic rewind reels are not supplied with control valve.)
- Manual rewind available in RT or LB configurations only.
- Finish:** refer to Page 4.
- Be sure to check dimensions and weights prior to ordering.**
- Some roller options may prohibit the use of our molded chain guard.



NOTICE: A Flexible Connector must be used between the inlet pipe and the inlet swivel joint.

* Dimensional weight may apply when shipped as a parcel package (via FedEx or UPS Ground).

*** x,y indicate mounting holes. See page 2

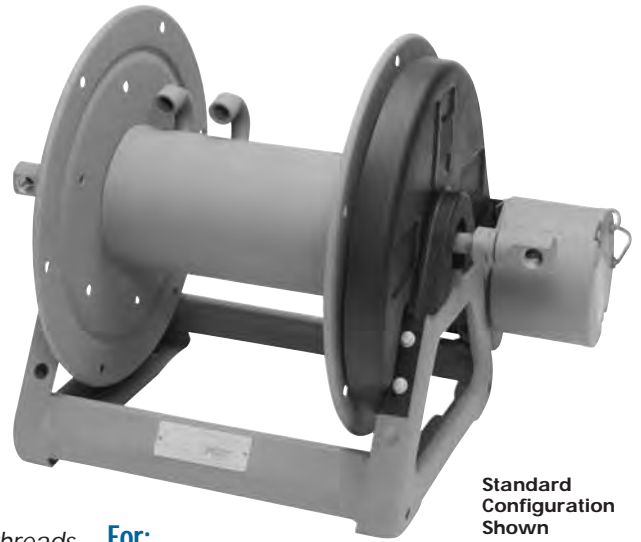
2000

MANUAL OR POWER REWIND REELS

To handle dual 1/4" through 1/2" I.D. hose.

- Two swivel joint inlets and two outlet risers to handle two equal lengths of hose.
- Chain-drive crank rewind or chain and sprocket rewind powered by an electric, or compressed air motor.
- MX Crank rewind reels pinion brake as standard.
- Power rewind reels are not supplied with a brake.
- Standard inlets 90° ball bearing swivel joints 1/2" female NPT threads.
- Standard outlets 1/2" female NPT threads.
- Pressures to 3000 psi (207 bar).
- Temperatures from +20° F to +400° F (-7° C to +204° C).
- Consult factory for other pressures & temps.
- Reels for use with oxygen/acetylene.

See Series 2400 Hannay Reels Welding Catalog H0408-W.



Standard Configuration Shown

For:

- Hydraulics
- Air/Water
- Spray Painting



Optional External Mounting Brackets part no. 9906.0025. Add 2-1/2" to the X dimensions shown in the chart.

Parts Drawing – ISO 112

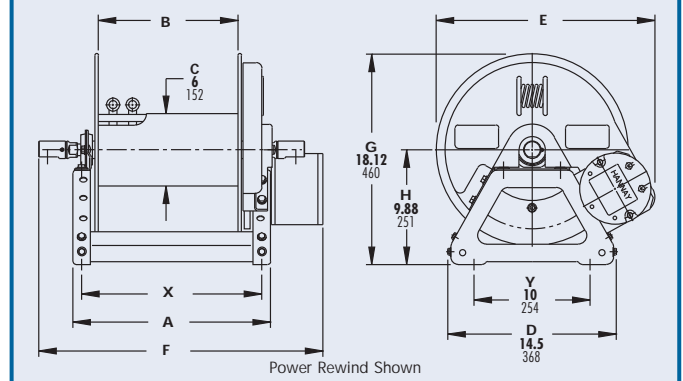
Model Number	Hose Capacity of Reel feet m.				Approx. Weight Crank Rewind ³ lb. kg.			Reel Dimensions**** inches mm.						
	I.D. (in) I.D. (mm)	1/4" 6	3/8" 10	1/2" 13	NET	UPS/ FedEx SHIP Wt.	Freight SHIP Wt.	A	B	E CRANK	E POWER	F CRANK	F POWER	X
	O.D. (in) O.D. (mm)	5/8" 16	3/4" 19	7/8" 22										
2016-17-18		2/100 2/31	2/75 2/23	2/50 2/15	32 15	68* 31	67 30	13 330	8 203	18.5 470	19 483	21 533	20 508	11.5 292
2020-17-18		2/175 2/53	2/125 2/38	2/75 2/23	34 15	83* 38	69 31	17 432	12 305	18.5 470	19 483	25 635	24 610	15.5 394
2026-17-18		2/275 2/84	2/200 2/61	2/125 2/38	36 16	94* 43	71 32	23 584	18 457	18.5 470	19 483	31 787	30 762	21.5 546
2030-17-18		2/350 2/107	2/250 2/76	2/175 2/53	37 17	110* 50	72 33	27 686	22 559	18.5 470	19 483	35 889	34 864	25.5 648
2036-17-18		2/425 2/130	2/300 2/91	2/225 2/69	39 18	110* 50	74 34	33 838	28 711	18.5 470	19 483	41 1041	40 1016	31.5 800

Notes:

1. Specifications subject to change.
2. Upon request, reels can be supplied with drum lengths other than shown and with disc sizes in other diameters.
3. Weights shown in chart are for crank rewind models. ADD these amounts for power rewind models:

	Net (lbs.)	Ship (lbs.)	Net (kg.)	Ship (kg.)
Electric	18	18	8.2	8.2
Air	15	15	6.8	6.8

4. Dimension "F" is the overall length of standard model reels. MX chain drive crank models, reels require 2" clearance to remove crank handle.
5. When ordering, prefix model number with:
A = Air Rewind E = Electric Rewind
MX = Chain Drive Crank
(Air rewind reels are supplied with control valve and 18" air hose;
12v and 24v DC rewind reels are supplied with switch and solenoid;
115v AC rewind reels are not supplied with switch but can be ordered separately.)
6. **Finish:** refer to Page 4.
7. **Be sure to check dimensions and weights prior to ordering.**
8. Some roller options may prohibit the use of our molded chain guard.



NOTICE: A Flexible Connector must be used between the inlet pipe and the inlet swivel joint.

* Dimensional weight may apply when shipped as a parcel package (via FedEx or UPS Ground).

*** x,y indicate mounting holes. See page 2



For:

- Hydraulics
- Air/Water
- Spray Painting

Standard
Gear Driven
Crank Rewind
Shown



Optional External
Mounting Brackets part
no. 9906.0025.
Add 2-1/2" to the X
dimensions shown in
the chart.

G2000

MANUAL REWIND REELS

To handle dual 1/4" through 1/2" I.D. hose.

- Two swivel joint inlets and two outlet risers to handle two equal lengths of hose.
- Gear-drive crank rewind.
- Pinion brake as standard.
- Standard inlets 90° ball bearing swivel joints 1/2" female NPT threads.
- Standard outlets 1/2" female NPT threads.
- Pressures to 3000 psi (207 bar).
- Temperatures from +20° F to +400° F (-7° C to +204° C).
- Consult factory for other pressures & temps.
- For power rewind see Series 2000, pg. 16.
- Reels for use with oxygen/acetylene.
(See Welding Catalog H-0408-W).

Parts Drawing – ISO 205

Model Number	Hose Capacity of Reel feet m.				Approx. Weight Crank Rewind lb. kg.			Reel Dimensions*** inches mm.			
	I.D. (in) I.D. (mm)	1/4" 6	3/8" 10	1/2" 13	NET	UPS/ FedEx SHIP Wt.	Freight SHIP Wt.	A	B	F	X
	O.D. (in) O.D. (mm)	5/8" 16	3/4" 19	7/8" 22							
G2016-17-18-8		2/75 2/23	2/50 2/15	2/35 2/11	40 15	68* 31	75 34	13 330	8 203	21 533	11.5 292
G2020-17-18-8		2/125 2/38	2/100 2/31	2/50 2/15	42 18	83* 38	77 35	17 432	12 305	25 635	15.5 394
G2026-17-18-8		2/200 2/61	2/150 2/46	2/100 2/31	44 19	94* 43	79 36	23 584	18 457	31 787	21.5 546

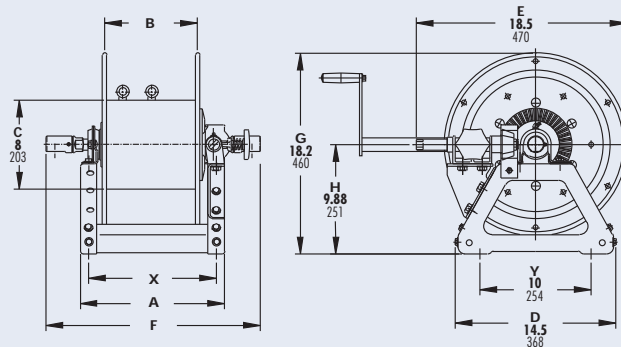
Notes:

1. Specifications subject to change.
2. Upon request, reels can be supplied with drum lengths other than shown.
3. **Finish:** refer to Page 4.
4. **Be sure to check dimensions and weights prior to ordering.**

NOTICE: A Flexible Connector must be used between the inlet pipe and the inlet swivel joint.

* Dimensional weight may apply when shipped as a parcel package (via FedEx or UPS Ground).

*** x,y indicate mounting holes. See page 2

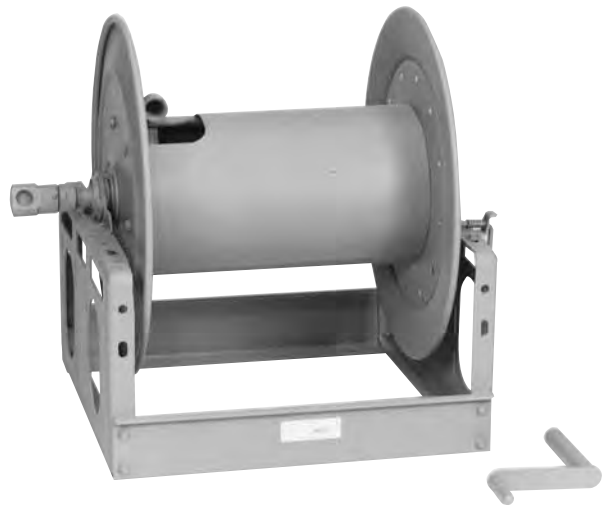


3000

MANUAL REWIND REELS

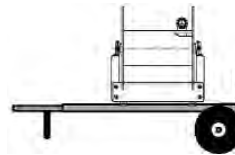
To handle 3/4" or 1" I.D. hose.

- Economical manual rewind reels for long lengths of hose.
- Choose disc rewind or removable direct crank rewind.
- Supplied with spring-actuated pin lock.
- Standard inlet 90° ball bearing swivel joint 1" female NPT threads.
- Standard outlet 1" female NPT thread.
- Optional bronze or aluminum swivel joint and stainless steel hub assembly and riser, are available
- Optional Rollers may be purchased.
- Pressures to 1000 psi (69 bar)
- Temperatures from -60° F to +250° F (-51° C to +121° C).
- Consult factory for other pressures & temps.



Standard with
Crank Handle

Optional Aluminum
Hand Cart
4300-AL Mounting
Available, see page 2



For:

- Fuel Dispensing
(Consult Factory)
- Spray Operations
- Fire Protection

Parts Drawing – ISO 113

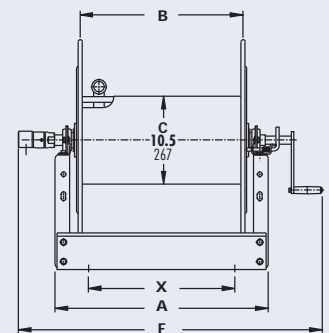
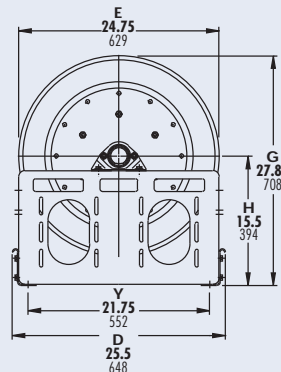
Model Number	Hose Capacity of Reel feet m.				Approx. Weight Crank Rewind lb. kg.		Reel Dimensions*** inches mm.			
	Round Hose			Collapsible Hose	NET	SHIP	A	B	F	X
	I.D. (in) I.D. (mm)	3/4" 19	1" 25	1" 25						
	O.D. (in) O.D. (mm)	1-9/32" 33	1-9/16" 40	1/2"x1-3/4" 13 x 44						
3016-25-26		100 30	50 15	200 61	85 39	120 54	13 330	7.5 191	23.75 603	7.75 197
3020-25-26		150 46	100 30	300 91	94 43	129 59	17 432	11.5 292	27.75 705	9 229
3024-25-26		250 76	150 46	400 122	103 47	138 63	21 533	15.5 394	31.75 806	13 330
3028-25-26		300 91	200 61	550 168	113 51	155 70	25.5 648	20 508	36.25 921	17.5 445

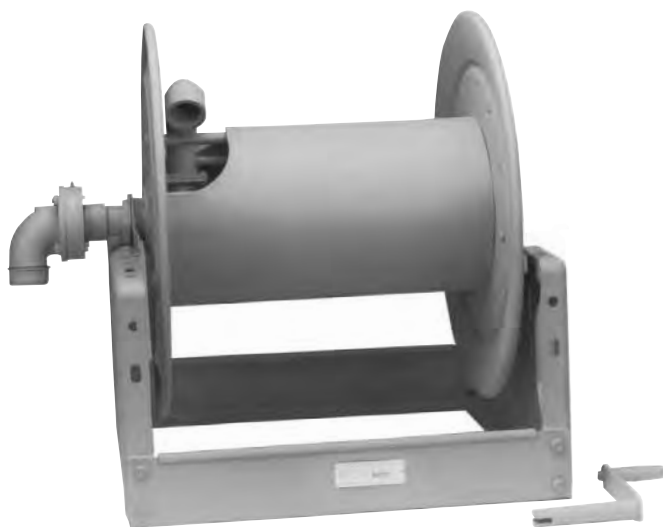
Notes:

- Specifications subject to change.
- Upon request, reels can be supplied with drum lengths other than shown and with disc sizes in other diameters.
- Power rewind NOT available on these models.**
- Dimension "F" is the overall length of standard model reels. Crank rewind models, 3-1/2" clearance required to remove crank.
- Subtract 5" from 'F' dimension for disc rewind models.
- Finish:** Call factory for offshore/marine finish, available at extra cost. Refer to Page 4.
- Be sure to check dimensions and weights prior to ordering.**

NOTICE: A Flexible Connector must be used between the inlet pipe and the inlet swivel joint.

*** x,y indicate mounting holes. See page 2





3500

MANUAL REWIND REELS

To handle 1" through 1-3/4" I.D. hose.

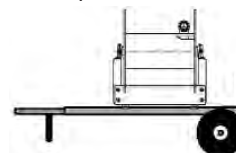
- Economical manual rewind reels for long lengths of hose.
- Choose disc rewind or removable direct crank rewind.
- Supplied with spring-actuated pin lock.
- Standard inlet 90° swivel joint 1-1/2" female NPT threads and 2" victaulic groove.
- Standard outlet flanged riser with 1-1/2" female NPT threads.
- Optional bronze or aluminum swivel joint and stainless steel hub assembly and riser, are available
- Optional Rollers may be purchased.
- Pressures to 600 psi (41 bar)
- Temperatures from -60° F to +175° F (-51° C to +79° C).
- Consult factory for other pressures & temps.

For:

- Fuel Dispensing
(Consult Factory)
- Bulk Transfer
- Fire Protection

Standard with
Crank Handle

Optional Aluminum
Hand Cart
4300-AL Mounting
Available, see page 2



Parts Drawing – ISO 111

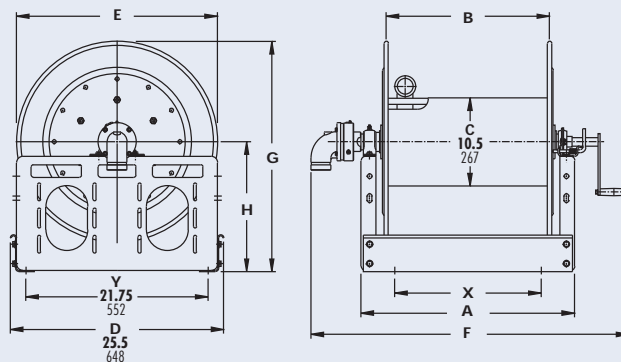
Model Number	Hose Capacity of Reel feet m.					Approx. Weight Crank Rewind lb. kg.		Reel Dimensions*** inches mm.						
	Round Hose		Collapsible Hose			NET	SHIP	A	B	E	F	G	H	X
	I.D. (in) I.D. (mm)	1" 25	1-1/2" 38	1-1/2" 38	1-3/4" 44									
	O.D. (in) O.D. (mm)	1-9/16" 40	2-1/16" 52	3/4"x3" 19 x 76	7/8"x3-1/4" 22 x 83									
3516-25-26		50 15	— —	50 15	50 15	95 43	130 59	13 330	7.5 191	24.75 629	26 660	27.88 708	15.5 394	7.75 197
3520-25-26		100 30	50 15	100 30	75 23	104 47	139 63	17 432	11.5 292	24.75 629	30 762	27.88 708	15.5 394	9 229
3524-25-26		150 46	75 23	150 46	100 30	113 51	157 71	21 533	15.5 394	24.75 629	34 864	27.88 708	15.5 394	13 330
3528-25-26		200 61	100 30	200 61	150 46	123 56	173 78	25.5 648	20 508	24.75 629	38.5 978	27.88 708	15.5 394	17.5 445
3524-30-31		200 61	100 30	250 76	150 46	124 56	174 79	21 533	15.5 394	28.75 730	34 864	29.88 759	15.5 394	13 330
3528-30-31		250 76	150 46	300 91	250 76	134 61	184 83	25.5 648	20 508	28.75 730	38.5 978	29.88 759	15.5 394	17.5 445
3534-30-31		350 107	200 61	450 137	350 107	147 67	197 89	31.5 800	26 660	28.75 730	44.5 1130	29.88 759	15.5 394	23.5 597
3530-33-34		400 122	250 76	450 137	350 107	138 63	188 85	27.5 699	22 559	31.75 806	40.5 1029	32.38 822	16.5 419	19.5 495

Notes:

1. Specifications subject to change.
2. Upon request, reels can be supplied with drum lengths other than shown and with disc sizes in other diameters.
3. **Power rewind NOT available on these models.**
4. Dimension "F" is the overall length of standard model reels.
Crank rewind models, 3-1/2" clearance required to remove crank.
5. Subtract 5" from 'F' dimension for disc rewind models.
6. **Finish:** Call factory for offshore/marine finish, available at extra cost.
Refer to Page 4.
7. **Be sure to check dimensions and weights prior to ordering.**

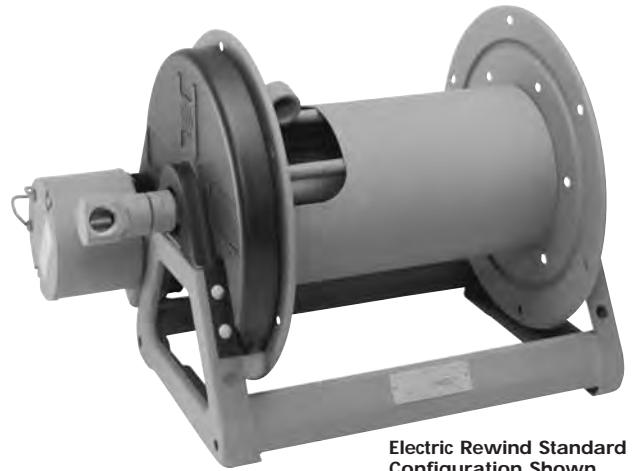
NOTICE: A Flexible Connector must be used between the inlet pipe and the inlet swivel joint.

*** x,y indicate mounting holes. See page 2



4000**MANUAL OR POWER
REWIND REELS****To handle single 3/4" or 1" I.D. hose.**

- Lightweight compact reels designed for long lengths of hose in manual and power rewind.
- Direct crank rewind is removable.
- Chain and sprocket drive powered by electric, hydraulic, or compressed air motor.
- Manual reels include: cam-lock drag brake, spring actuated pin lock.
- Comet brake is standard on power rewind reels.
- Standard inlet 90° ball bearing swivel joint 1" female NPT threads.
- Standard outlet 1" female NPT threads.
- Optional Rollers: Specify roller position when ordering.
- Pressures to 1000 psi (69 bar).
- Temperatures from -60° F to +250° F (-51° C to +121° C).
- Consult factory for other pressures & temps.

Parts Drawing – ISO 68**Electric Rewind Standard Configuration Shown****For:**

- Fuel Dispensing
(Consult Factory)
- Fire Protection

- Water Supply
- Chemical Transfer

**Optional External Mounting Brackets part no. 9906.0025. Add 2-1/2" to the X dimensions shown in the chart.**

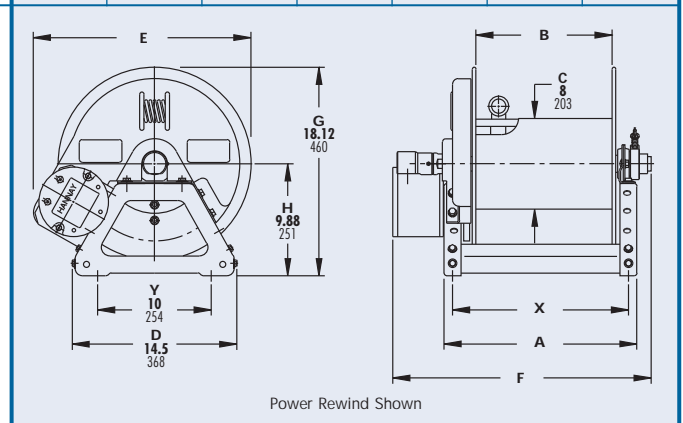
Model Number	Hose Capacity of Reel <u>feet</u> m.			Approx. Weight Crank Rewind ³ <u>lb.</u> kg.			Reel Dimensions*** <u>inches</u> mm.						
	I.D. (in) I.D. (mm)	3/4" 19	1" 25	NET	UPS/ FedEx SHIP Wt.	Freight SHIP Wt.	A	B	E CRANK	E POWER	F CRANK	F POWER	X
	O.D. (in) O.D. (mm)	1-9/32" 33	1-9/16" 40										
4018-17-18		50 15	35 11	36 16	68* 31	71 32	15 381	10 254	16.5 419	19 483	27 686	20.5 521	13.5 343
4024-17-18		100 30	50 15	46 21	83* 38	81 37	21 533	16 406	16.5 419	19 483	33 838	26.5 673	19.5 495
4030-17-18		150 46	75 23	57 26	94* 43	92 42	27 686	22 559	16.5 419	19 483	39 991	32.5 826	25.5 648
4038-17-18		200 61	100 30	70 32	— —	124 56	35 889	30 762	16.5 419	19 483	47 1194	40.5 1029	33.5 851

Notes:

- Specifications subject to change.
 - Upon request, reels can be supplied with drum lengths other than shown.
 - Weights shown in chart are for crank rewind models. ADD these amounts for power rewind models:
- | | Net (lbs.) | Ship (lbs.) | Net (kg.) | Ship (kg.) |
|-----------|------------|-------------|-----------|------------|
| Electric | 18 | 18 | 8.2 | 8.2 |
| Hydraulic | 15 | 15 | 6.8 | 6.8 |
| Air | 15 | 15 | 6.8 | 6.8 |
- Dimension "F" is the overall length of standard model reels. Crank rewind reels require 3-1/2" clearance to remove or install crank handle.
 - When ordering power rewind models, prefix model number with:
A = Air Rewind E = Electric Rewind HD = Hydraulic Rewind
(Air rewind reels are supplied with control valve and 18" air hose; 12v and 24v DC rewind reels are supplied with switch and solenoid; 115v AC rewind reels are not supplied with switch but can be ordered separately; hydraulic rewind reels are not supplied with control valve.)
 - Finish:** refer to Page 4.
 - Be sure to check dimensions and weights prior to ordering.**
 - Some roller options may prohibit the use of our molded chain guard.
- NOTICE:** A Flexible Connector must be used between the inlet pipe and the inlet swivel joint.

* Dimensional weight may apply when shipped as a parcel package (via FedEx or UPS Ground).

*** x,y indicate mounting holes. See page 2, also for external mounting brackets.





Electric Rewind Shown
with Gear Driven
Crank Rewind

4100

MANUAL OR POWER REWIND REELS

To handle single 3/4" or 1" I.D. hose.

- Lightweight compact reels designed for long lengths of hose in manual and power rewind.
- Gear driven crank rewind handle is removable.
- Chain and sprocket drive powered by electric, hydraulic, or compressed air motor.
- Gear driven crank rewind, adjustable pinion brake.
- Standard inlet 90° ball bearing swivel joint 1" female NPT threads.
- Standard outlet 1" female NPT threads.
- Optional Rollers: Specify roller position when ordering.
- Pressures to 1000 psi (69 bar).
- Temperatures from -60° F to +250° F (-51° C to +121° C).
- Consult factory for other pressures & temps.

For:

- Fuel Dispensing
(Consult Factory)
- Fire Protection
- Water Supply
- Chemical Transfer

Parts Drawing – ISO 206

Model Number	Hose Capacity of Reel <u>feet</u> m.			Approx. Weight Crank Rewind ³ <u>lb.</u> kg.		Reel Dimensions*** <u>inches</u> mm.					
	I.D. (in) I.D. (mm)	3/4" 19	1" 25	NET	SHIP	A	B	E CRANK	E POWER	F	X
For Power Rewind See Note 5	O.D. (in) O.D. (mm)	1-9/32" 33	1-9/16" 40								
4118-17-18		50 15	35 11	62 28	97 44	15 381	10 254	18 457	20.5 521	21.5 546	7.5 190
4124-17-18		100 30	50 15	72 33	107 49	21 533	16 406	18 457	20.5 521	27.5 699	13.5 343
4130-17-18		150 46	75 23	83 38	118 54	27 686	22 559	18 457	20.5 521	33.5 851	19.5 495
4138-17-18		200 61	100 30	96 44	131 59	35 889	30 762	18 457	20.5 521	41.5 1054	27.5 698

Notes:

1. Specifications subject to change.
2. Upon request, reels can be supplied with drum lengths other than shown.
3. Weights shown in chart are for crank rewind models. ADD these amounts for power rewind models:

	Net (lbs.)	Ship (lbs.)	Net (kg.)	Ship (kg.)
Electric	18	18	8.2	8.2
Hydraulic	15	15	6.8	6.8
Air	15	15	6.8	6.8

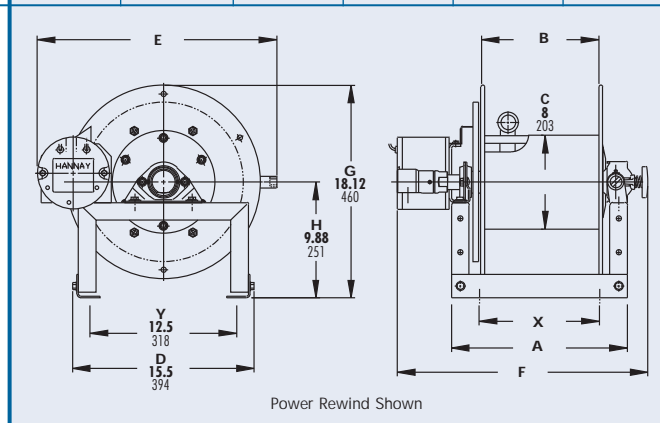
4. Dimension "F" is the overall length of standard model reels.
5. When ordering power rewind models, prefix model number with:
A = Air Rewind E = Electric Rewind HD = Hydraulic Rewind
(Air rewind reels are supplied with control valve and 18" air hose; 12v and 24v DC rewind reels are supplied with switch and solenoid; 115v AC rewind reels are not supplied with switch but can be ordered separately; hydraulic rewind reels are not supplied with control valve.)

6. **Finish:** refer to Page 4.

7. **Be sure to check dimensions and weights prior to ordering.**

NOTICE: A Flexible Connector must be used between the inlet pipe and the inlet swivel joint.

*** x,y indicate mounting holes. See page 2

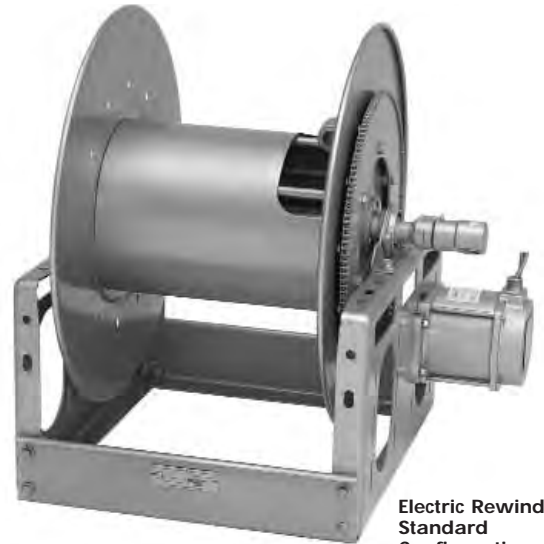


6000

MANUAL OR POWER REWIND REELS

To handle single 1/2" through 1" I.D. hose.

- Heavy-duty reel for longer lengths of hose.
- Choose Gear-driven crank rewind or chain and sprocket drive powered by an electric, hydraulic or compressed air motor.
- Crank rewind reels supplied with pinion brake, power rewind reels with a comet brake.
- Standard inlet a 90° ball bearing swivel joint 1" female NPT threads.
- Standard outlet 1" female NPT threads.
- Standard inlet, outlet riser and hub assembly are steel. Optional bronze or aluminum swivel joint and stainless steel hub assembly and riser, are available.
- Optional Rollers may be purchased.
- Pressures to 1000 psi (69 bar).
- Temperatures from -60° F to +250° F (-51° C to +121° C).
- Consult factory for other pressures & temps.
- Chainguard available upon request, must be specified.



Electric Rewind
Standard
Configuration
Shown

For:

- Fuel Dispensing
(Consult Factory)
- Spray Operations
- Fire Protection
- Water Blasting*
- Sewer Cleaning*

*Heavy-duty construction required. Consult factory.



Optional Auxiliary Rewind

Ring and pinion shaft rewind unit with removable crank handle



Shown with optional Assembly C Roller
Top Wind

6000

Parts Drawing – ISO 84

Model Number	Hose Capacity of Reel feet m.				Approx. Weight Crank Rewind ³ lb. kg.		Reel Dimensions*** inches mm.									
	I.D. (in) I.D. (mm)	1/2" 13	3/4" 19	1" 25	NET	SHIP	A	B	D	E	F CRANK	F POWER	G	H	X	Y
	O.D. (in) O.D. (mm)	7/8" 22	1-9/32" 33	1-9/16" 40												
6024-19-21		235 72	125 38	60 18	85 39	127 58	21 533	15.5 394	20.5 521	18.75 476	25.38 645	28.5 724	21.5 546	12.12 308	13 330	16.75 425
6032-19-21		350 107	200 61	100 30	102 46	144 65	29.5 749	24 610	20.5 521	18.75 476	33.88 861	37 940	21.5 546	12.12 308	21.5 546	16.75 425
6024-23-24		450 137	185 56	100 30	92 42	134 61	21 533	15.5 394	20.5 521	22.75 578	25.38 645	28.5 724	23.5 597	12.12 308	13 330	16.75 425
6030-23-24		– –	250 76	150 46	105 48	147 67	27.5 699	22 559	20.5 521	22.75 578	31.88 810	35 889	23.5 597	12.12 308	19.5 495	16.75 425
6038-23-24		– –	350 107	200 61	120 54	162 73	35 889	29.5 749	20.5 521	22.75 578	39.38 1000	42.5 1080	23.5 597	12.12 308	27 686	16.75 425
6016-25-26		285 87	100 30	60 18	88 40	130 59	13 330	7.5 191	25.5 648	24.75 629	17.38 441	20.5 521	27.88 708	15.5 394	7.75 197	21.75 552
6022-25-26		500 152	200 61	100 30	100 45	142 64	19 483	13.5 343	25.5 648	24.75 629	23.38 594	26.5 673	27.88 708	15.5 394	11 279	21.75 552
6028-25-26		– –	300 91	200 61	113 51	155 70	25.5 648	20 508	25.5 648	24.75 629	29.88 759	33 838	27.88 708	15.5 394	17.5 445	21.75 552
6018-30-31		450 137	235 72	135 41	101 46	151 68	15 381	9.5 241	25.5 648	28.75 730	19.38 492	22.5 572	29.88 759	15.5 394	7 178	21.75 552
6024-30-31		– –	400 122	200 61	113 51	163 74	21 533	15.5 394	25.5 648	28.75 730	25.38 645	28.5 724	29.88 759	15.5 394	13 330	21.75 552
6028-30-31		– –	500 152	265 81	121 55	171 78	25.5 648	20 508	25.5 648	28.75 730	29.88 759	33 838	29.88 759	15.5 394	17.5 445	21.75 552
† 6030-30-31		– –	550 168	300 91	125 57	175 79	27.5 699	22 559	25.5 648	28.75 730	31.88 810	35 889	29.88 759	15.5 394	19.5 495	21.75 552
† 6028-33-34		– –	600 183	350 107	129 59	179 81	25 635	20 508	31.5 800	31.75 806	29.62 752	32.75 832	33.62 854	17.75 451	17.5 445	27.75 705

Notes:

Specifications subject to change.

- Upon request, reels can be supplied with drum lengths other than shown and with disc sizes in other diameters.
- Dimensions shown for reels up to and including 30-31 disc size reflect pressed frames. All others are rollformed channel frames.
- Weights shown in chart are for crank rewind models. ADD these amounts for power rewind models:

	Net (lbs.)	Ship (lbs.)	Net (kg.)	Ship (kg.)
Electric 1/2 HP	40	40	18.1	18.1
Hydraulic	20	20	9.1	9.1
Air	20	20	9.1	9.1

- When ordering power rewind models, prefix model number with:
A = Air Rewind EP = Electric Rewind (1/2 hp) HD = Hydraulic Rewind
(Air rewind reels are supplied with control valve and 18" air hose; 12v and 24v DC rewind reels are supplied with switch and solenoid; 115v AC rewind reels are not supplied with switch but can be ordered separately; hydraulic rewind reels are not supplied with control valve.)

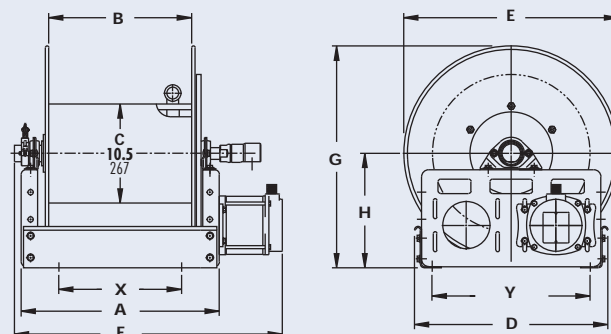
5. **Finish:** refer to Page 4.

6. **Be sure to check dimensions and weights prior to ordering.**

NOTICE: A Flexible Connector must be used between the inlet pipe and the inlet swivel joint.

*** x,y indicate mounting holes. See page 2

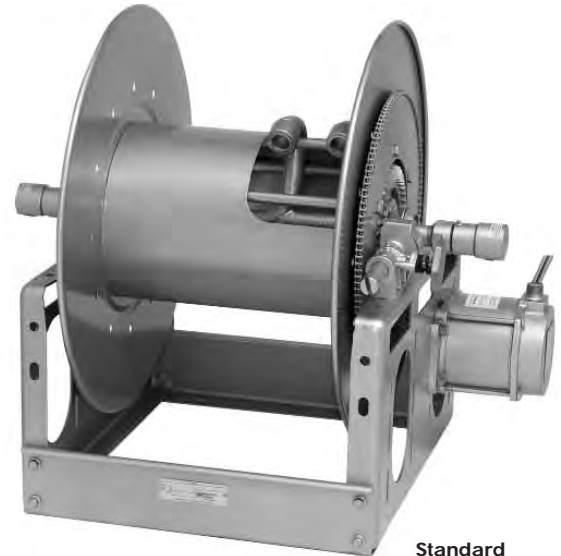
† Some applications require a clutch/reduction unit.



Power Rewind Shown

7000**DUAL HOSE REELS MANUAL
OR POWER REWIND****To handle dual 3/4" or 1" I.D. hose.**

- Two swivel joint inlets and two outlet risers to handle two equal lengths of hose.
- Choose gear-driven crank rewind or chain & sprocket drive powered by an electric, hydraulic or compressed air motor. An auxiliary rewind is standard.
- Crank rewind and power rewind reels, pinion brake standard.
- Standard inlets 90° ball bearing swivel joints 1" female NPT threads.
- Standard outlets 1" female NPT threads.
- Standard inlet, outlet riser and hub assembly are steel. Optional bronze or aluminum swivel joint and stainless steel hub assembly and riser, are available.
- Pressures to 1000 psi (69 bar).
- Temperatures from -60° F to +250° F (-51° C to +121° C).
- Consult factory for other pressures & temps, optional chainguard.

**Standard
Configuration
Shown****For:**

- Hydraulics
- Dual Agents

Parts Drawing – ISO 72

Model Number	Hose Capacity of Reel feet m.			Approx. Weight Crank Rewind ⁴ lb. kg.		Reel Dimensions*** inches mm.									
	I.D. (in)	3/4"	1"	NET	SHIP	A	B	D	E	F CRANK	F POWER	G	H	X	Y
	I.D. (mm) O.D. (in) O.D. (mm)	19 1-9/32" 33	25 1-9/16" 40												
For Power Rewind See Note 5															
7024-19-21		2/60 2/18	2/25 2/8	100 45	142 64	21 533	15.5 394	20.5 521	21.88 556	29.75 756	32.12 816	21.5 546	12.12 308	13 330	16.75 425
7026-23-24		2/90 2/27	2/50 2/15	105 48	147 67	23 584	17.5 445	20.5 521	23 584	31.75 806	34.12 867	23.5 597	12.12 308	15 381	16.75 425
7016-25-26		2/40 2/12	2/30 2/9	95 43	145 66	13 330	7.5 191	25.5 648	24.75 629	21.75 552	24.12 613	27.88 708	15.5 394	7.75 197	21.75 552
7032-25-26		2/175 2/53	2/100 2/31	129 59	179 81	29.5 749	24 610	25.5 648	24.75 629	38.25 972	40.62 1032	27.88 708	15.5 394	21.5 546	21.75 552
† 7032-30-31		2/300 2/91	2/150 2/46	137 62	187 85	29.5 749	24 610	25.5 648	28.75 730	38.25 972	40.62 1032	29.88 759	15.5 394	21.5 546	21.75 552
† 7024-33-34		2/225 2/69	2/115 2/35	120 54	170 77	20.5 521	15.5 394	31.5 800	31.75 806	29.75 756	32.12 816	33.62 854	17.75 451	13 330	27.75 705
† 7032-33-34		2/350 2/107	2/200 2/61	137 62	187 85	29 737	24 610	31.5 800	31.75 806	38.25 972	40.62 1032	33.62 854	17.75 451	21.5 546	27.75 705

Notes:

1. Specifications subject to change.
2. Upon request, reels can be supplied with drum lengths other than shown and with disc sizes in other diameters.
3. Dimensions shown up to and including 30-31 disc size reflect pressed frames. All others are rollformed channel frames.
4. Weights shown in chart are for crank rewind models. ADD these amounts for power rewind models:

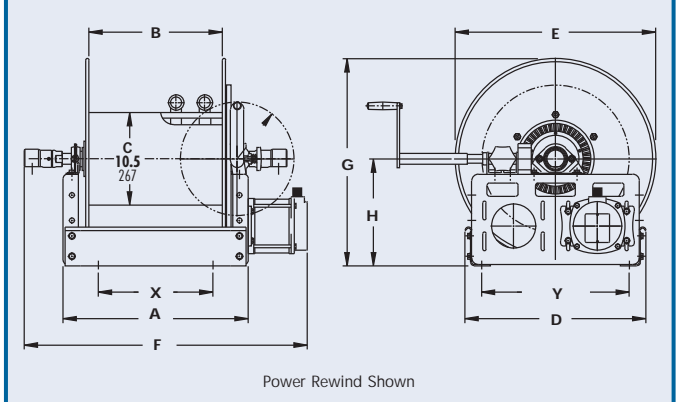
	Net (lbs.)	Ship (lbs.)	Net (kg.)	Ship (kg.)
Electric	40	40	18.1	18.1
Hydraulic	20	20	9.1	9.1
Air	20	20	9.1	9.1

5. When ordering, prefix model number with:

A = Air Rewind EP = Electric Rewind
 MX = Chain Drive Crank HD = Hydraulic Rewind
 (Air rewind reels are supplied with control valve and 18" air hose; 12v and 24v DC rewind reels are supplied with switch and solenoid; 115v AC rewind reels are not supplied with switch but can be ordered separately; hydraulic rewind reels are not supplied with control valve.)

6. **Finish:** refer to Page 4.

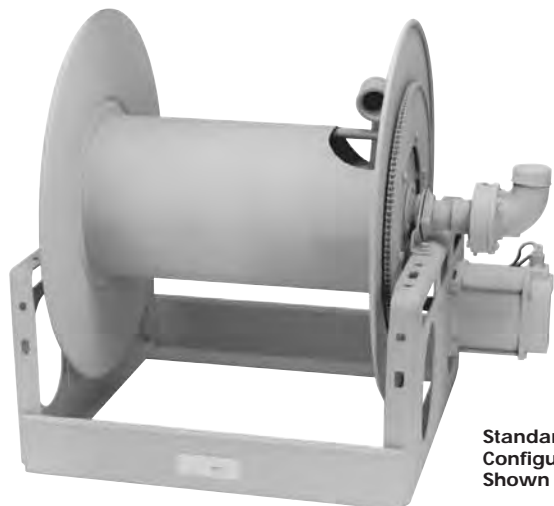
7. **Be sure to check dimensions and weights prior to ordering.**

**Power Rewind Shown**

NOTICE: A Flexible Connector must be used between the inlet pipe and the inlet swivel joint.

*** x,y indicate mounting holes. See page 2

† Some applications require a clutch/reduction unit.



Standard
Configuration
Shown

7500

MANUAL OR POWER REWIND REELS

To handle single 1" through 1-1/2" I.D. hose.

- Heavy-duty reel designed for longer lengths.
- Choose gear-driven crank rewind or chain and sprocket drive powered by an electric, hydraulic or compressed air motor.
- Crank rewind reels supplied with pinion brake and power rewind reels with a comet brake.
- Standard inlet 90° ball bearing swivel joint 1-1/2" female NPT threads and 2" victaulic groove.
- Standard outlet flanged riser 1-1/2" female NPT threads.
- Standard inlet, outlet riser and hub assembly are steel. Optional bronze or aluminum swivel joint and stainless steel hub assembly and riser, are available.
- Rollers may be purchased as accessory items.
- Operate at pressures to 600 psi (41 bar).
- Temperatures from -60° F to +175° F (-51° C to +79° C).
- Consult factory for other pressures & temps, optional chainguard.



Optional Auxiliary Rewind (Ring and pinion shaft
rewind unit with removable crank handle)

For:

- Fuel Dispensing
(Consult Factory)
- Bulk Transfer
- Suction/Discharge
(Consult Factory)

Parts Drawing – ISO 18

Model Number	Hose Capacity of Reel feet m.				Approx. Weight Crank Rewind ⁴ lb. kg.		Reel Dimensions*** inches mm.									
	I.D. (in) I.D. (mm)	1" 25	1-1/4" 32	1-1/2" 38	NET	SHIP	A	B	D	E	F CRANK	F POWER	G	H	X	Y
	O.D. (in) O.D. (mm)	1-9/16" 40	1-13/16" 46	2-1/16" 52												
7528-19-21		85 26	70 21	50 15	104 47	146 66	25.5 648	20 508	20.5 521	18.75 476	32 813	33 838	21.5 546	12.12 308	17.5 445	16.75 425
7538-23-24		200 61	190 58	100 30	130 59	172 78	35 889	29.5 749	20.5 521	22.75 578	41.5 1054	42.5 1080	23.5 597	12.12 308	27 686	16.75 425
7520-25-26		115 35	75 23	50 15	106 48	148 67	17 432	11.5 292	25.5 648	24.75 629	23.5 597	24.5 622	27.88 708	15.5 394	9 229	21.75 552
7528-25-26		200 61	135 41	100 30	123 56	165 75	25.5 648	20 508	25.5 648	24.75 629	32 813	33 838	27.88 708	15.5 394	17.5 445	21.75 552
7522-30-31		190 58	160 49	100 30	118 54	168 76	19 483	13.5 343	25.5 648	28.75 730	25.5 648	26.5 673	29.88 759	15.5 394	11 279	21.75 552
† 7528-30-31		285 87	260 79	160 49	131 59	181 82	25.5 648	20 508	25.5 648	28.75 730	32 813	33 838	29.88 759	15.5 394	17.5 445	21.75 552
† 7526-33-34		335 102	200 61	200 61	133 60	183 83	22.5 572	17.5 445	31.5 800	31.75 806	29.25 743	30.25 768	33.62 854	17.75 451	15 381	27.75 705

Notes:

- Specifications subject to change.
- Upon request, reels can be supplied with drum lengths other than shown and with disc sizes in other diameters.
- Dimensions shown for reels up to and including 30-31 disc size reflect pressed frames. All others are rollformed channel frames.
- Weights shown in chart are for crank rewind models. ADD these amounts for power rewind models:

	Net (lbs.)	Ship (lbs.)	Net (kg.)	Ship (kg.)
Electric	40	40	18.1	18.1
Hydraulic	20	20	9.1	9.1
Air	20	20	9.1	9.1
- When ordering power rewind models, prefix model number with:

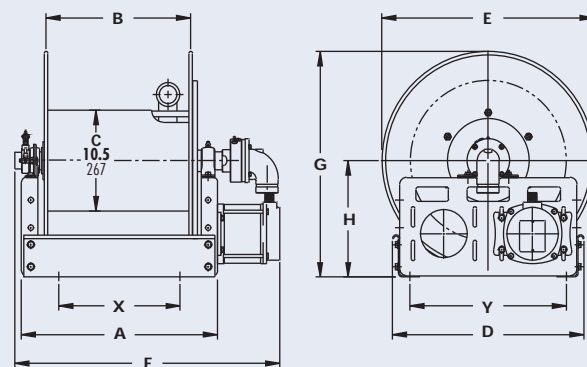
A = Air Rewind EP = Electric Rewind (1/2 hp) HD = Hydraulic Rewind

(Air rewind reels are supplied with control valve and 18" air hose; 12v and 24v DC rewind reels are supplied with switch and solenoid; 115v AC rewind reels are not supplied with switch but can be ordered separately; hydraulic rewind reels are not supplied with control valve.)
- Finish:** refer to Page 4.
- Be sure to check dimensions and weights prior to ordering.**

NOTICE: A Flexible Connector must be used between the inlet pipe and the inlet swivel joint.

*** x,y indicate mounting holes. See page 2

† Some applications require a clutch/reduction unit.



Power Rewind Shown

8000**MANUAL OR POWER
REWIND REELS****To handle single 1-1/2" or 2" I.D. hose.**

- Heavy-duty reel designed for longer lengths and larger diameters of hose through 2" I.D.
- Choose gear-driven crank rewind or chain and sprocket drive powered by an electric, hydraulic or compressed air motor.
- Crank rewind reels supplied with a pinion brake, power rewind reels with a comet brake.
- Standard inlet 90° ball bearing swivel joint 2" female NPT threads.
- Standard outlet flanged riser 2" female NPT threads
- Standard inlet, outlet riser and hub assembly are steel. Optional bronze or aluminum swivel joint and stainless steel hub assembly and riser, are available.
- Rollers may be purchased as accessory items.
- Pressures to 600 psi (41 bar).
- Temperatures from -60° F to +175° F (-51° C to +79° C).
- Consult factory for other pressures & temps.



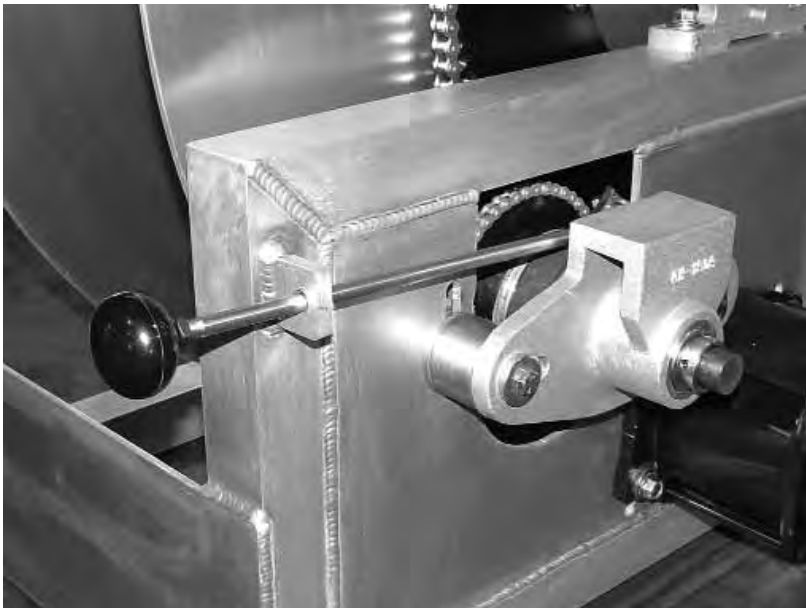
Shown with Optional
Auxiliary Rewind

For:

- Bulk Transfer
- Chemical Transfer
- General Dispensing
- Suction/Discharge
(consult factory)

- **Fueling Applications**

Refer to:
Aviation Catalog
H-0418-AVIA
Petroleum Catalog
H-0417-FD

**Chain Clutch-Reduction Units**

For use on reels with 39" diameter or larger discs and/or when increased torque and slower rewind speeds are required. Factory-installed when specified or available as an accessory item.

8000

Parts Drawing – ISO 35

Model Number	Hose Capacity of Reel feet m.			Approx. Weight Crank Rewind ³ lb. kg.		Reel Dimensions*** inches mm.									
	I.D. (in) I.D. (mm)	1-1/2" 38	2" 51	NET	SHIP	A	B	D	E	F CRANK	F POWER	G	H	X	Y
	O.D. (in) O.D. (mm)	2-1/16" 52	2-9/16" 65												
8234-26-27		80 24	60 18	120 54	170 77	26.25 667	20 508	27 686	25.75 654	33.75 857	34.75 883	26.62 676	13.75 349	18.75 476	23.25 591
8238-26-27		100 30	75 23	145 66	195 88	30.25 768	24 610	27 686	25.75 654	37.75 959	38.75 984	26.62 676	13.75 349	22.75 578	23.25 591
8246-26-27		145 44	100 30	196 89	245 112	38.25 972	32 813	27 686	25.75 654	45.75 1162	46.75 1188	26.62 676	13.75 349	30.75 781	23.25 591
8226-33-34		85 26	60 18	80 36	150 68	17.75 451	11.5 292	31.5 800	31.75 806	25.25 641	26.25 667	33.38 848	17.75 445	10.25 260	27.75 705
8234-33-34		150 46	115 35	133 60	230 105	26.25 667	20 508	31.5 800	31.75 806	33.75 857	34.75 883	33.38 848	17.75 445	18.75 476	27.75 705
8238-39-40		340 104	225 69	218 99	420 191	30.25 768	24 610	40 1016	39 991	37.75 959	38.75 984	39.88 1013	20.38 518	22.75 578	37 940

Notes:

- Specifications subject to change.
- Upon request, reels can be supplied with drum lengths other than shown and with disc sizes in other diameters.
- Weights shown in chart are for crank rewind models. ADD these amounts for power rewind models:

	Net (lbs.)	Ship (lbs.)	Net (kg.)	Ship (kg.)
Electric	40	40	18.1	18.1
Hydraulic	20	20	9.1	9.1
Air	20	20	9.1	9.1

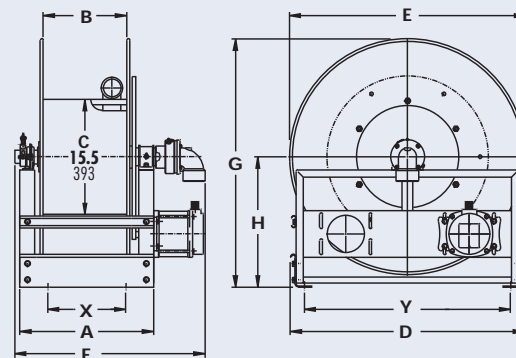
- When ordering power rewind models, prefix model number with:
A = Air Rewind EP = Electric Rewind (1/2 HP)
HD = Hydraulic Rewind
(Air rewind reels are supplied with control valve and 18" air hose; 12v and 24v DC rewind reels are supplied with switch and solenoid; 115v AC rewind reels are not supplied with switch but can be ordered separately; hydraulic rewind reels are not supplied with control valve.)

- Finish:** refer to Page 4.

- Be sure to check dimensions and weights prior to ordering.**

NOTICE: A Flexible Connector must be used between the inlet pipe and the inlet swivel joint.

*** x,y indicate mounting holes. See page 2



2000

MANUAL OR POWER REWIND REELS

To handle 2" through 3" I.D. hose.

- Heavy-duty reel designed for longer lengths and larger diameters of hose through 3" I.D.
- Choose gear-driven crank rewind or chain and sprocket drive powered by an electric, hydraulic or compressed air motor.
- Crank rewind reels supplied with a pinion brake power rewind reels with a comet brake.
- Standard inlet 90° ball bearing swivel joint 3" female NPT threads.
- Standard outlet flanged riser 3" female NPT threads.
- Standard, outlet riser and hub assembly are aluminum with ductile inlet. Optional bronze or aluminum swivel joint and stainless steel hub assembly and riser, are available.
- Rollers may be purchased as accessory items.
- Pressures to 300 psi (21 bar).
- Temperatures from -20° F to +225° F (-29° C to +107° C).
- Consult factory for other pressures & temps.



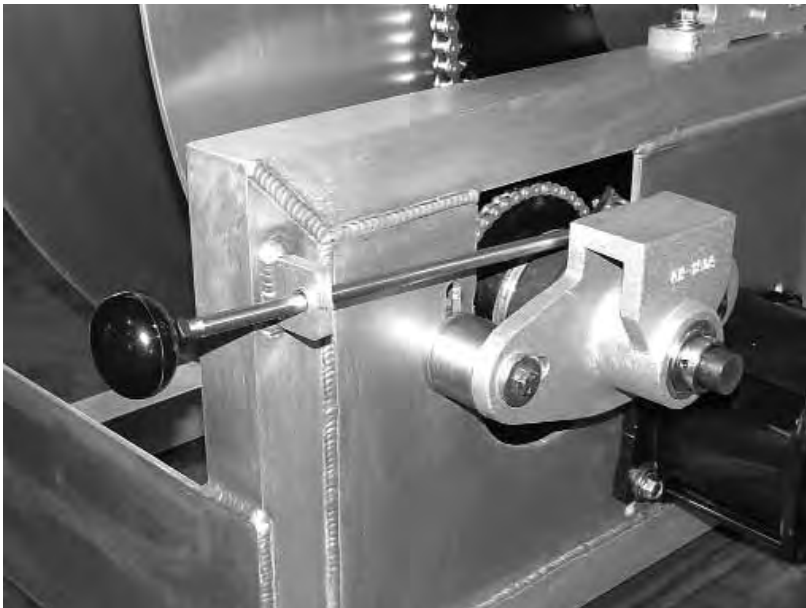
Shown with Optional
Auxiliary Rewind

For:

- Suction/Discharge
(consult factory)
- High Volume
Application
- Bulk Transfer
- Chemical Transfer

• Fueling Applications

Refer to:
Aviation Catalog
H-0418-AVIA
Petroleum Catalog
H-0417-FD



Chain Clutch-Reduction Units

For use on reels with 39" diameter or larger discs and/or when increased torque and slower rewind speeds are required. Factory-installed when specified or available as an accessory item.

2000

Parts Drawing – ISO 57

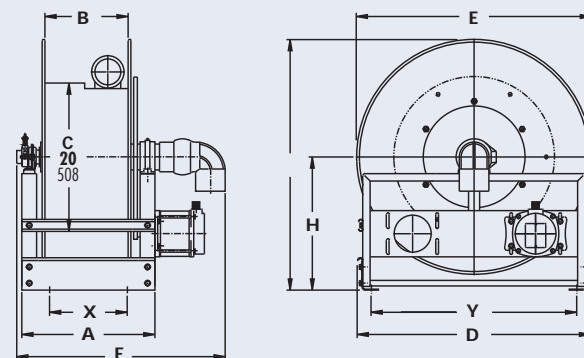
Model Number	Hose Capacity of Reel feet m.				Approx. Weight Crank Rewind ³ lb. kg.		Reel Dimensions** inches mm.									
	I.D. (in) I.D. (mm)	2" 51	2-1/2" 64	3" 76	NET	SHIP	A	B	D	E	F CRANK	F POWER	G	H	X	Y
	O.D. (in) O.D. (mm)	2-9/16" 65	3-3/16" 81	3-3/4" 95												
9332-33-34		70 21	30 9	25 8	147 67	217 98	23.75 603	17.5 445	31.5 800	31.75 80	33.75 857	33.25 845	33.88 861	18 457	16.25 413	27.75 705
9338-33-34		100 30	45 14	35 11	187 85	257 117	30.25 768	24 610	31.5 800	31.75 807	40.25 1022	39.75 1010	33.88 861	18 457	22.75 578	27.75 705
9346-33-34		140 43	60 18	50 15	237 108	372 169	38.25 972	32 813	31.5 800	31.75 807	48.25 1226	47.75 1213	33.88 861	18 457	30.75 781	27.75 705
9338-39-40		185 56	90 27	80 24	239 108	480 218	30.25 768	24 610	40 1016	39 991	40.25 1022	39.75 1010	40.38 1026	20.88 530	22.75 578	37 940
9334-45-46		200 61	130 40	115 35	361 164	525 239	26.25 667	20 508	46 1168	45 1143	36.25 921	35.75 908	46.38 1178	23.88 607	18.75 476	43 1092

Notes:

- Specifications subject to change.
 - Upon request, reels can be supplied with drum lengths other than shown and with disc sizes in other diameters.
 - Weights shown in chart are for crank rewind models. ADD these amounts for power rewind models:
- | | Net (lbs.) | Ship (lbs.) | Net (kg.) | Ship (kg.) |
|-----------|------------|-------------|-----------|------------|
| Electric | 40 | 40 | 18.1 | 18.1 |
| Hydraulic | 20 | 20 | 9.1 | 9.1 |
| Air | 20 | 20 | 9.1 | 9.1 |
- When ordering power rewind models, prefix model number with:
A = Air Rewind EP = Electric Rewind (1/2 HP)
HD = Hydraulic Rewind
(Air rewind reels are supplied with control valve and 18" air hose;
12v and 24v DC rewind reels are supplied with switch and solenoid;
115v AC rewind reels are not supplied with switch but can be
ordered separately; hydraulic rewind reels are not supplied with
control valve.)

5. **Finish:** refer to Page 4.6. **Be sure to check dimensions and weights prior to ordering.****NOTICE:** A Flexible Connector must be used between the inlet pipe and the inlet swivel joint.

*** x,y indicate mounting holes. See page 2



1100/AT1200

PORTABLE HOSE REELS ON WHEELS

To handle 3/8" through 1" I.D. hose.

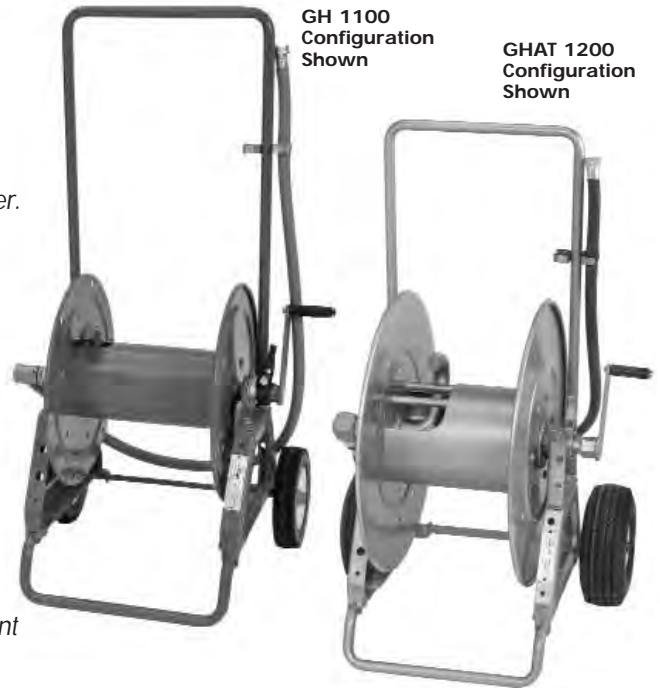
- Continuous flow reels with swivel joint inlet, fluid hub, outlet riser.
- Direct crank rewind and cam-lock brake.
- One-piece foot, and removable steel handlebar.
- Permanently attached crank.
- GH Prefix to model # (e.g. GH1100, GHAT1200) includes garden hose thread on outlet, 5' lead-in hose, hose end clips.

Model 1100 – standard inlet 90° ball bearing swivel joint 1/2" female NPT threads.

- Standard outlet is 1/2" female NPT threads.
- Pressures to 3000 psi (207 bar).
- Temperatures from +20° F to +400° F (-7° C to +204° C).
- Comes with rubber tires.

Model AT1200 –standard inlet 90° balance pressure swivel joint 1" female NPT threads.

- Standard outlet is 1" female NPT threads.
- Operates at pressures to 1000 psi (69 bar).
- Temperatures from -40° F to +250° F (-40° C to +121° C).
- Consult factory for other pressures & temps.
- Comes with pneumatic tires.



For:

- Grounds Maintenance
- Restaurants/Hotels
- Washdown Operations
- Home Use

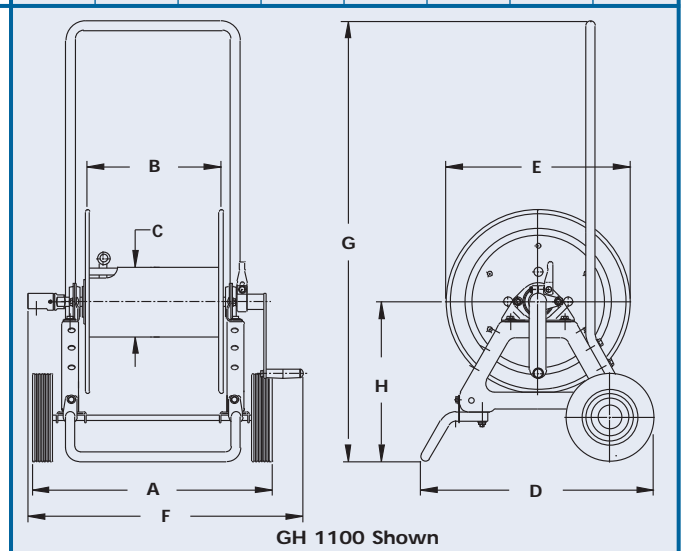
Parts Drawing – 1100–ISO 48; AT1200–ISO 87

Model Number	Hose Capacity of Reel feet m.						Approx. Weight lb. kg.		Reel Dimensions inches mm.							
	I.D. (in) I.D. (mm)	3/8" 10	1/2" 13	5/8" 16	3/4" 19	1" 25	NET	SHIP	A	B	C	D	E	F	G	H
	O.D. (in) O.D. (mm)	3/4" 19	7/8" 22	1" 25	1-9/32" 31	1-9/16" 38										
1100		275 84	175 53	125 38	– –	– –	47 21	85* 39	21.5 546	12 305	6 152	22 559	16.5 419	24.62 625	39 991	13.81 351
AT1200		– –	350 107	250 76	150 46	100 30	86 39	125* 57	24.88 632	11.5 292	8 203	23 584	22.75 578	26.5 673	40 1016	17.25 438

Notes:

1. Specifications subject to change.
2. **Finish:** refer to Page 4.
3. **Be sure to check dimensions and weights prior to ordering.**

* Dimensional weight may apply when shipped as a parcel package (via FedEx or UPS Ground).
Some assembly required.



GH 1100 Shown

C1150/ATC1250

PORTABLE STORAGE REELS ON WHEELS

For storage of hose, cable, rope or wire.

- Direct crank rewind.
- One-piece foot, and removable steel handlebar.
- Supplied with a cam-lock drag brake.

C1150 – with rubber tires.

- A 1-1/8" x 2-3/8" (28 mm x 60 mm) opening in the drum to initiate winding.

ATC1250 – with pneumatic tires.

- A larger version of the C1150 with a 4-1/2" x 9" (114 mm x 229 mm) drum opening.

For:

- Industrial Maintenance
- Construction
- Agriculture
- Grounds Maintenance



Optional Folding Handle for Compact Storage

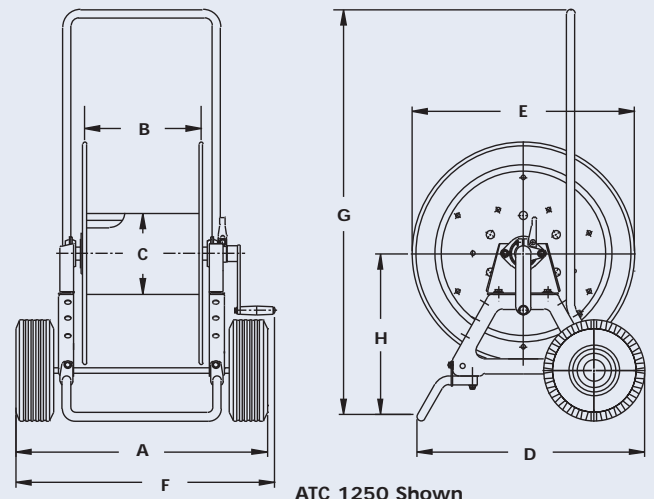
Parts Drawing – C1150-ISO 87; ATC1250-ISO 48

Model Number	Cable Capacity of Reel					Approx. Weight		Reel Dimensions							
	feet m.					lb. kg.		inches mm.							
	Gauge/Number of Conductors														
	O.D. (in) O.D. (mm)	16/3 .390 10	14/3 .530 14	12/3 .600 15	10/3 .690 18	NET	SHIP	A	B	C	D	E	F	G	H
C1150		1100 335	500 152	400 122	300 91	44 20	85* 39	21.5 546	12 305	6 152	22 559	16.5 419	24.25 616	39 991	13.81 351
ATC1250		1800 549	950 290	750 229	550 168	84 38	125* 57	24.88 32	11.5 292	8 203	23 584	22.75 578	26.5 673	40 1016	17.25 438

Notes:

1. Specifications subject to change.
2. When ordering specify model number, O.D., length and weight of cable, hose, etc.
3. **Finish:** refer to Page 4.
4. **Be sure to check dimensions and weights prior to ordering.**

* Dimensional weight may apply when shipped as a parcel package (via FedEx or UPS Ground).
Some assembly required.



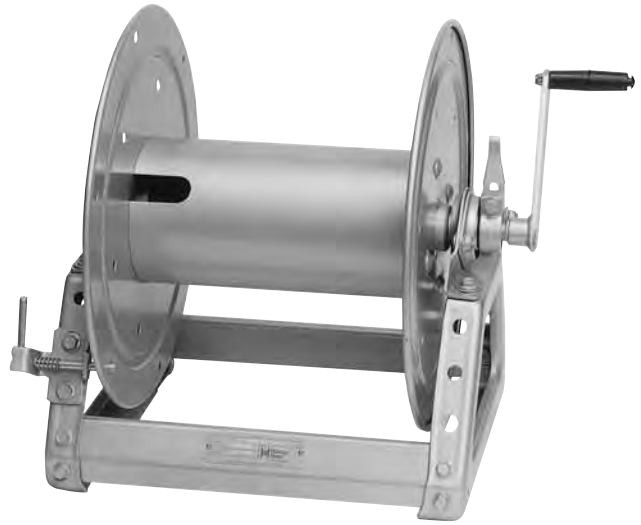
ATC 1250 Shown

C1500

MANUAL OR POWER REWIND STORAGE REELS

To handle single 1/4" through 1" O.D.

- Reels are designed for storage of long lengths of hose, cable, rope, wire or other materials.
- A 1-1/8" x 2-3/8" (28 mm x 60 mm) opening in the drum to initiate winding.
- Direct crank rewind, permanently attached. Removable crank option is available. Also available chain and sprocket rewind powered by electric, compressed air, or hydraulic motor.
- Supplied with cam lock brake on manual rewind models only.
- Optional divider discs can be placed at almost any point. Be sure to specify spacing of discs on your order.
- Rollers may be purchased as accessory items.



Standard
Configuration
Shown

For Storage Of:

- Hose
- Cable
- Rope
- Wire

Parts Drawing – ISO 179

Model Number	Hose Capacity of Reel feet m.					Approx. Weight Crank Rewind ⁴ lb. kg.			Reel Dimensions*** inches mm.						
	O.D. (in) O.D. (mm)	1/4" 6	1/2" 13	3/4" 19	1" 25	NET	UPS/ FedEx SHIP Wt.	Freight SHIP Wt.	A	B	E CRANK	E POWER	F CRANK	F POWER	X
C1514-17-18		1300 396	325 99	150 46	75 23	23 10	55* 25	58 26	11 279	6 152	16.5 419	19 483	16 406	15.75 400	9.5 241
C1520-17-18		–	650 198	300 91	150 46	25 11	68* 31	60 27	17 432	12 305	16.5 419	19 483	22 559	21.75 552	15.5 394
C1526-17-18		–	900 274	450 137	225 69	27 12	83* 38	62 28	23 584	18 457	16.5 419	19 483	28 711	27.75 705	21.5 546
C1530-17-18		–	1000 305	550 168	275 84	29 13	94* 43	64 29	27 686	22 559	16.5 419	19 483	32 813	31.75 806	25.5 648

Notes:

1. Specifications subject to change.
2. Upon request, reels can be supplied with drum lengths other than shown and with disc sizes in other dimensions.
3. Dimensions reflect pressed frames.
4. Weights shown in chart are for crank rewind models.
ADD these amounts for power rewind models.

	Net (lbs.)	Ship (lbs.)	Net (kg.)	Ship (kg.)
Electric	18	18	8.2	8.2
Hydraulic	15	15	6.8	6.8
Air	15	15	6.8	6.8

5. When ordering power rewind models

Prefix model number with:

A = Air Rewind E = Electric Rewind HD = Hydraulic Rewind

(Air rewind reels are supplied with control valve and 18" air hose;

12v and 24v DC rewind reels are supplied with switch and solenoid;

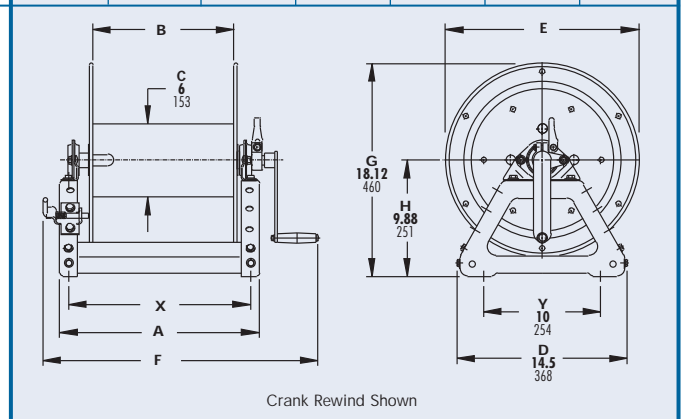
115v AC rewind reels are not supplied with switch but can be ordered separately; hydraulic rewind reels are not supplied with control valve.)

6. **Finish:** refer to Page 4.

7. **Be sure to check dimensions and weights prior to ordering.**

* Dimensional weight may apply when shipped as a parcel package (via FedEx or UPS Ground).

*** x,y indicate mounting holes. See page 2



Optional External
Mounting Brackets part
no. 9906.0025.
Add 2-1/2" to the X
dimensions shown in
the chart.

C3200

MANUAL REWIND STORAGE REELS

To handle single 1/2" through 1-1/2" O.D.

- A 4-1/2" x 9" (114mm x 229mm) opening in the drum to initiate winding.
- Designed for storage of long lengths of hose, cable, rope, wire or other materials.
- Choose disc rewind or removable direct crank rewind.
- Supplied with spring actuated pin lock.
- Optional divider discs can be placed at almost any point. Be sure to specify spacing of discs on your order.
- Rollers may be purchased as accessory items.

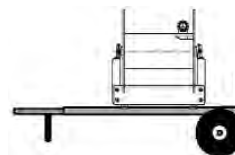
Standard
Configuration Shown

For Storage Of:

- Hose
- Cable
- Rope
- Wire

Standard with
Crank Handle

Optional Aluminum
Hand Cart
4300-AL Mounting
Available, see page 2



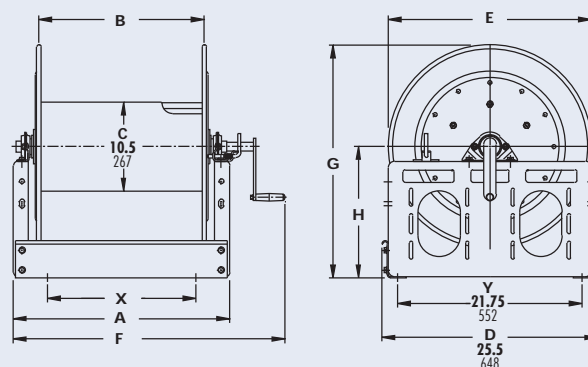
Parts Drawing – ISO 117

Model Number	Hose Capacity of Reel <u>feet</u> m.						Approx. Weight Crank Rewind <u>lb.</u> kg.		Reel Dimensions*** <u>inches</u> mm.						
	O.D. (in) O.D. (mm)	1/2" 13	3/4" 19	1" 25	1-1/4" 32	1-1/2" 38	NET	SHIP	A	B	E CRANK	F CRANK	G	H	X
C3218-25-26		1000 305	450 137	225 69	125 38	90 27	85 39	127 58	15 381	9.5 241	24.75 629	22 559	27.88 708	15.5 394	7 178
C3228-25-26		– –	1000 305	500 152	325 99	200 61	109 49	151 68	25.5 648	20 508	24.75 629	32.5 826	27.88 708	15.5 394	17.5 445
C3234-25-26		– –	1300 396	650 198	400 122	275 84	122 55	164 74	31.5 800	26 660	24.75 629	38.5 978	27.88 708	15.5 394	23.5 597

Notes:

1. Specifications subject to change.
2. Upon request, reels can be supplied with drum lengths other than shown and with disc sizes in other dimensions.
3. Dimensions reflect pressed frames.
4. Series C3200 requires 3-1/2" clearance to remove crank handle.
5. Subtract 5" from 'F' dimension for disc rewind on C3200 Series.
6. **Finish:** refer to Page 4.
7. **Be sure to check dimensions and weights prior to ordering.**

*** x,y indicate mounting holes. See page 2

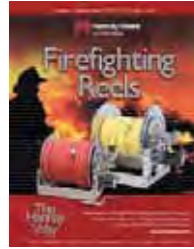




Stainless Steel Reels



Cable Reels



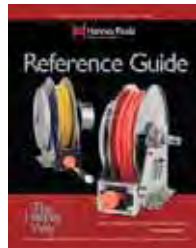
Firefighting Reels



Welding Reels



Pumper/Cleaner Reels



Reference Guide



Pressure Wash and Spray Reels



Audio/Video Reels



Ordering & Accessory Guide



Family owned and operated since 1933, Hannay Reels is the world leader in both OEM and aftermarket applications. Hannay offers thousands of standard hose reel and cable reel models, as well as unmatched custom capabilities. We can easily and affordably customize a reel to meet your exact specifications – built to last, delivered fast. Additional catalogs are available through your local Hannay Reels dealer or online at www.hannay.com.



553 State Route 143 • Westerlo, New York 12193
Toll Free Phone: 1-**877**-GO-REELS • Toll Free Fax: 1-800-REELING

E-mail: reels@hannay.com

Intl. Phone: 1-518-797-3791 • Intl. Fax: 1-518-797-3259

www.hannay.com



MADE IN U.S.A.